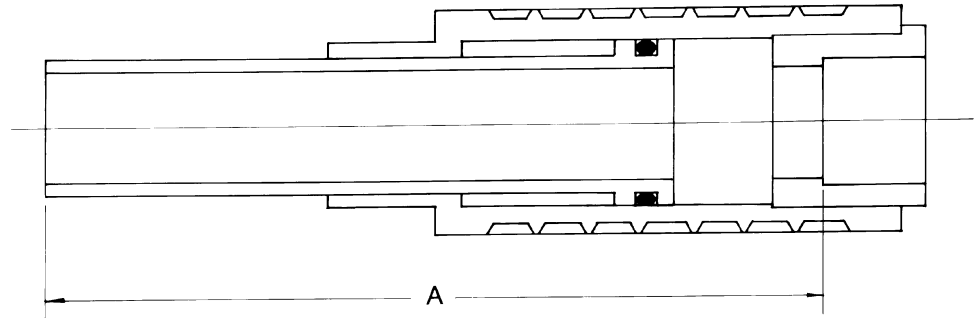


SLIP - FIX®
REPAIR COUPLING

SF-0501

Effective May 7, 2001 • Supercedes SF-5 of April 8, 1996

Slip-Fix, the in-line PVC repair coupling, makes repairing a broken line, installing a valve or adding a lateral or riser fast and simple. There is no need to dig back long sections of pipe to repair a broken line, and a Slip-Fix is easy to install next to fittings where space is limited. Slip-Fix requires no bracing, there are no nuts to tighten, and it ensures a permanent seal. A 1500 psi-rated O-ring and the patented O-ring relief and pressure ratings to Schedule 40 tolerances assure a tight seal with no leaks.



Slip-Fix® w/Dimensions

Figure No.	Size	List Price	Incremental Order Qty.*	Unit Weight	UPC 039923-	Dimension A (in)	
						Open	Closed
FSF-050	1/2	\$ 3.41	25	.271	065711	5 1/2	7 1/2
FSF-075	3/4	3.82	25	.376	065728	6	8
FSF-100	1	4.49	25	.549	065735	6 3/8	8 7/8
FSF-125	1 1/4	8.37	15	.955	065742	7 3/4	10 1/4
FSF-150	1 1/2	9.07	15	1.192	065759	8 7/8	11 1/8
FSF-200	2	14.11	12	1.754	065766	9 5/8	12 5/8
FSF-250	2 1/2	22.68	6	2.765	065773	11 1/4	15 1/4
FSF-300	3	28.38	6	4.258	065780	12 5/8	16 5/8
FSF-400	4	49.63	4	6.452	065797	13 3/4	17 3/4

Prices subject to change without notice

NIBCO
AHEAD OF THE FLOW™

NIBCO INC. WORLD HEADQUARTERS WEB: www.nibco.com	1516 MIDDLEBURY STREET ELKHART, IN 46516-4740 USA	DOMESTIC CUSTOMER SERVICE PHONE: 800.234.0227 FAX: 800.234.0557	TECHNICAL SERVICE PHONE: 888.446.4226 FAX: 888.336.4226	INTERNATIONAL SERVICE PHONE: +1/219.295.3221 FAX: +1/219.295.3455
---	---	---	---	---

Slip-Fix® - The Problem Solver

Repair a broken line, add a riser or install a valve – easier and faster than ever. Thanks to Slip-Fix, the versatile, in-line PVC repair coupling from NIBCO. Slip-Fix is the on-site problem solver designed with the contractor in mind.

With Slip-Fix there's no need to dig back long sections of pipe to repair a broken line. Simply cut out the damaged piece, drop in Slip-Fix and glue for a tight, permanent seal. It's that easy.

Slip-Fix also greatly simplifies valve installations and riser additions. Easy to install next to fittings where space is limited, Slip-Fix requires no bracing. The economical Slip-Fix takes the place of unions at a fraction of the cost.

Installation Instructions:

Installing a coupler or tee:

1. Solvent weld fitting to male end of Slip-Fix. Compress Slip-Fix. Lay assembly on pipe and cut section 1/4" longer than compressed Slip-Fix.

2. Solvent weld fitting end of Slip-Fix to pipe.

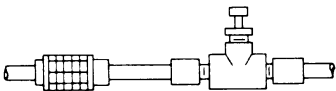
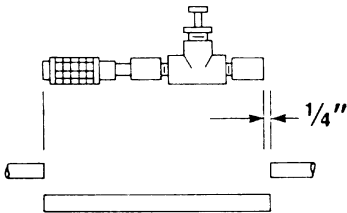
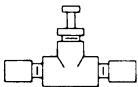
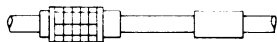
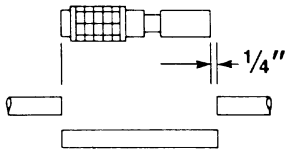
3. Apply solvent to female end of Slip-Fix and to pipe. Extend Slip-Fix over pipe.

Installing a valve:

1. Install male adapters to valve. Solvent weld to male end of Slip-Fix.

2. Lay assembly on pipe and cut section 1/4" longer than Slip-Fix/valve assembly. Solvent weld pipe section to other end of valve.

3. Apply solvent to female end of Slip-Fix and to pipe. Rotate and extend Slip-Fix over pipe.



NIBCO
AHEAD OF THE FLOW®

NIBCO INC.
WORLD HEADQUARTERS
WEB: www.nibco.com

1516 MIDDLEBURY STREET
ELKHART, IN 46516-4740
USA

DOMESTIC CUSTOMER SERVICE
PHONE: 800.234.0227
FAX: 800.234.0557

TECHNICAL SERVICE
PHONE: 888.446.4226
FAX: 888.336.4226

INTERNATIONAL SERVICE
PHONE: +1/219.295.3221
FAX: +1/219.295.3455