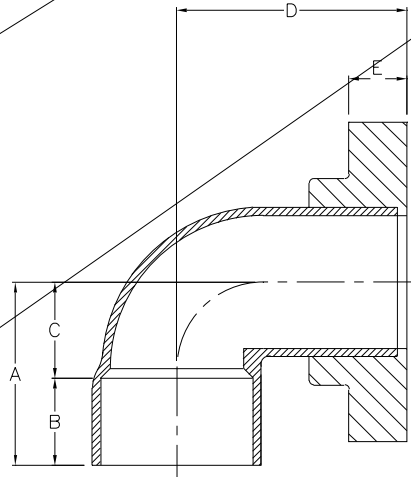


	A	B	C	D	E	WT. LBS.
	1 3/4	7/8	7/8	3	3/4	0.4
	1 13/16	1		3 1/2	7/8	0.6
		1 1/4	7/8	3 1/2	1 1/16	1.5
	2 9/16	1 5/16		4	1 1/16	2.1
		1 1/2		4 1/2	1 3/16	3.1
2 1/2	3 3/4	1 3/4	2	5	1 1/4	4.1
3			2 1/4	5 1/2	1 1/4	5.2
4				6 1/2	1 5/8	10.1
6	7 5/8	3 1/2	4 1/8	8	1 1/2	15.5
8	8 5/8	3	4 7/8	9	1 5/8	21.1
10	10 3/8	4	6 3/8	11	1 3/4	37.0
12	12 3/4	4 1/2	8 1/4	12	2 1/8	58.0
14	15 1/8	4 3/4	10 3/8	14	2 1/2	78.0
16	15 1/2	5 3/8	10 1/8	16	2 3/4	98.5
18	17 9/16	5 3/8	12 3/16	16 1/2	3	119.5
20	19 3/8	5 3/8	14	18	3 1/4	149.0
24	36	9	27	36	*	-
30	45	12	33	45	*	-



**Conley
Corporation**

SPECIFICATION DRAWING
#108 FLG X CEM 90° ELL

* PER SPECIFIC APPLICATION

CONTENTS

SIZE IN.	A	B	C			
1/2	1 1/8	7/8	1/4			
3/4	1 1/2	1	1/2			
1	1 7/8	1 1/4	5/8			1.3
1 1/2	2 5/16	1 5/16	1	2 1/4	6	1.8
2	2 9/16	1 1/2	1 1/16	2 1/2	1 3/16	3.4
2 1/2	3 1/4	1 3/4	1 1/2	3	1 1/4	4.1
3	3 5/8	2	1 5/8	3	1 1/4	4.5
4	4 1/2	2 5/8	1 7/8	4	1 5/8	7.5
6	5 1/2	3 1/2	2	5	1 1/2	11.2
8	6 7/16	3 3/4	2 11/16	5 1/2	1 5/8	17.0
10	7 9/16	4	3 9/16	6 1/2	1 3/4	29.5
12	8 7/8	4 1/2	4 3/8	7 1/2	2 1/8	47.0
14	9 3/4	4 3/4	5	8 1/2		
16	11 1/4	5 3/8	5 7/8	9		
18	11 7/8		6 1/2	9 1/2		
20	12 1/4		6 7/8	10 1/2	3 1/4	
24	24	9	15			
30	30 5/8	12	18 5/8			

SPECIFICATION DRAWING
#109 FLG X CEM 45° ELL

