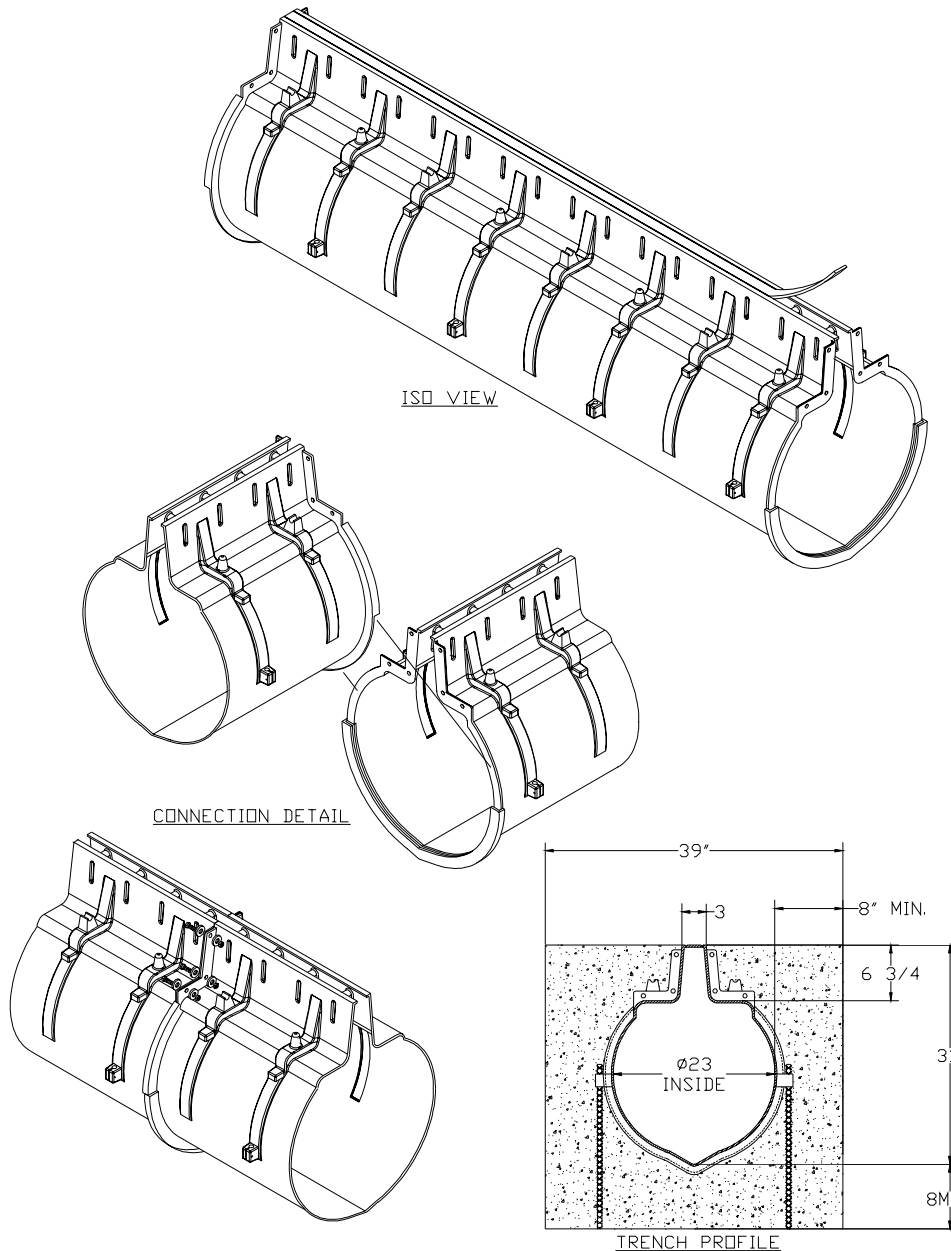




# Z-888-36 HI-CAP TRENCH DRAIN SYSTEM



## **ENGINEERING SPECIFICATION**

**Zurn Z-888-36** 23" wide 1-3/4" slotted High Capacity trench drain system. Linear low density polyethylene modular drain channel with smooth non-stick, non-corrosive interior and 0% water absorption. 80" modular sections with integral frame, mechanically interlocking joints and smooth radiused interior. Integral tie-down/leveling devices at 20" intervals and load distribution rebar stances for application of continuous lengths of rebar for structural integrity.

## **PREFIX OPTIONS**

**Z\***- 80" linear low density polyethylene modular drain channel with integral top frame.

\*Regularly Furnished Unless Otherwise Specified

Form # 00FB09-6 Date: 3/8/00