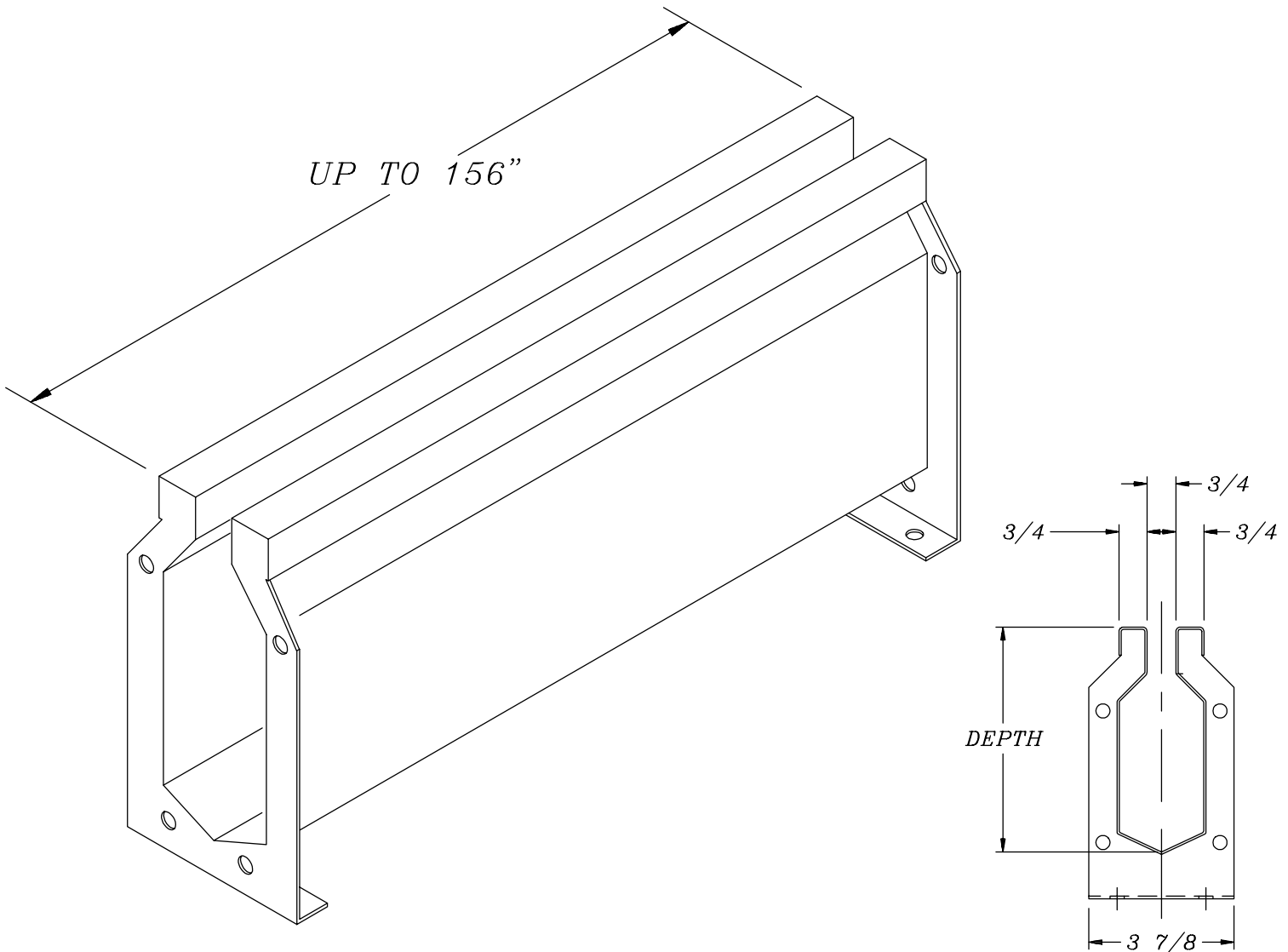




Z-891 STAINLESS STEEL TRENCH

TAG _____

Dimensions Subject to Manufacturing Tolerances



ENGINEERING SPECIFICATION: Zurn Z-891 Pre-Sloped Trench Drainage System with nominal 3/4" opening at top and 1/8" per foot bottom slope. Supplied in modular sections in length's up to 13 feet. #16 Gage Type 304 Stainless Steel drain channel with bolted flanged connection complete with flange gasket.

OPTIONS (Check/specify appropriate options)

___ -CB Catch Basin

REV. _____	DATE: 01-04-00	C.N. NO. 83304
DWG. NO. 64022	PRODUCTNO. Z-891	