

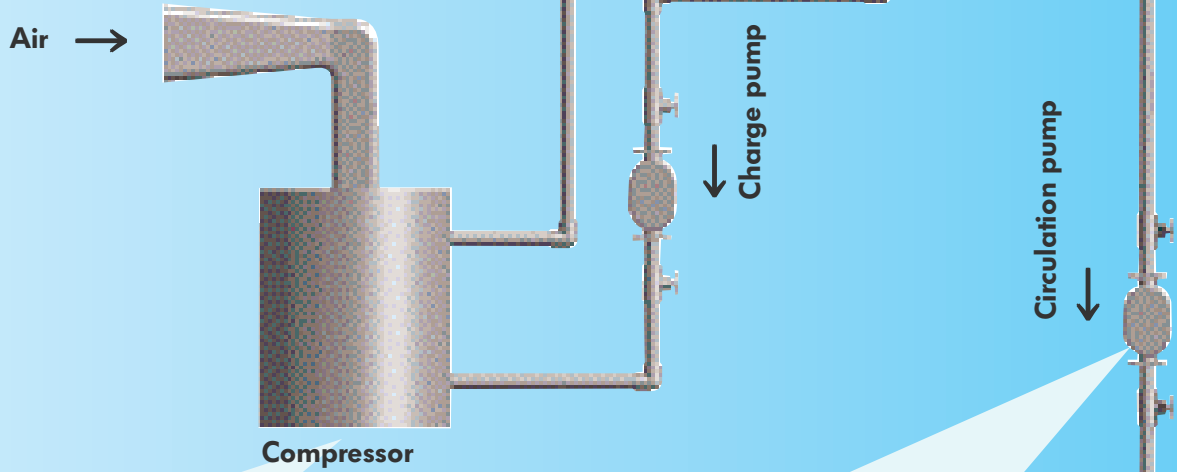
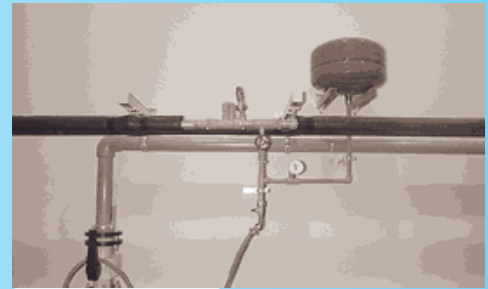


Ninglin Chen
Marketing GZ Asia

The INSTAFLEX Piping System (PB) for Heat Recovery

No energy is wasted at our Plastic Plant in Shanghai. Heat is recovered from the air compressors and used to produce hot water in the factory. The piping system for this installation was, of course, done in our very own polybutene INSTAFLEX system.

Good mechanical resistance, in particular thermoforming resistance, make polybutene (PB) an important material in piping system construction. It is a perfect choice for hot and cold water pipes and can very often be found in single family homes, apartment buildings and complexes, high rises, industrial and administration buildings, hospitals, schools, homes for the elderly and disabled, civil, military and public service buildings – and not only in new buildings, but also in renovation and remodeling projects. The example we are presenting to you today shows that polybutene can also be used for cold and hot water pipes in heat recovery installations. This particular installation is in our Plastic Plant in Shanghai (People's Republic of China). Compressed air from compressors is used in pipe and fitting production (extrusion line and injection molding

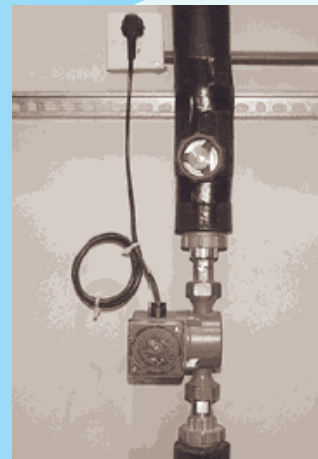


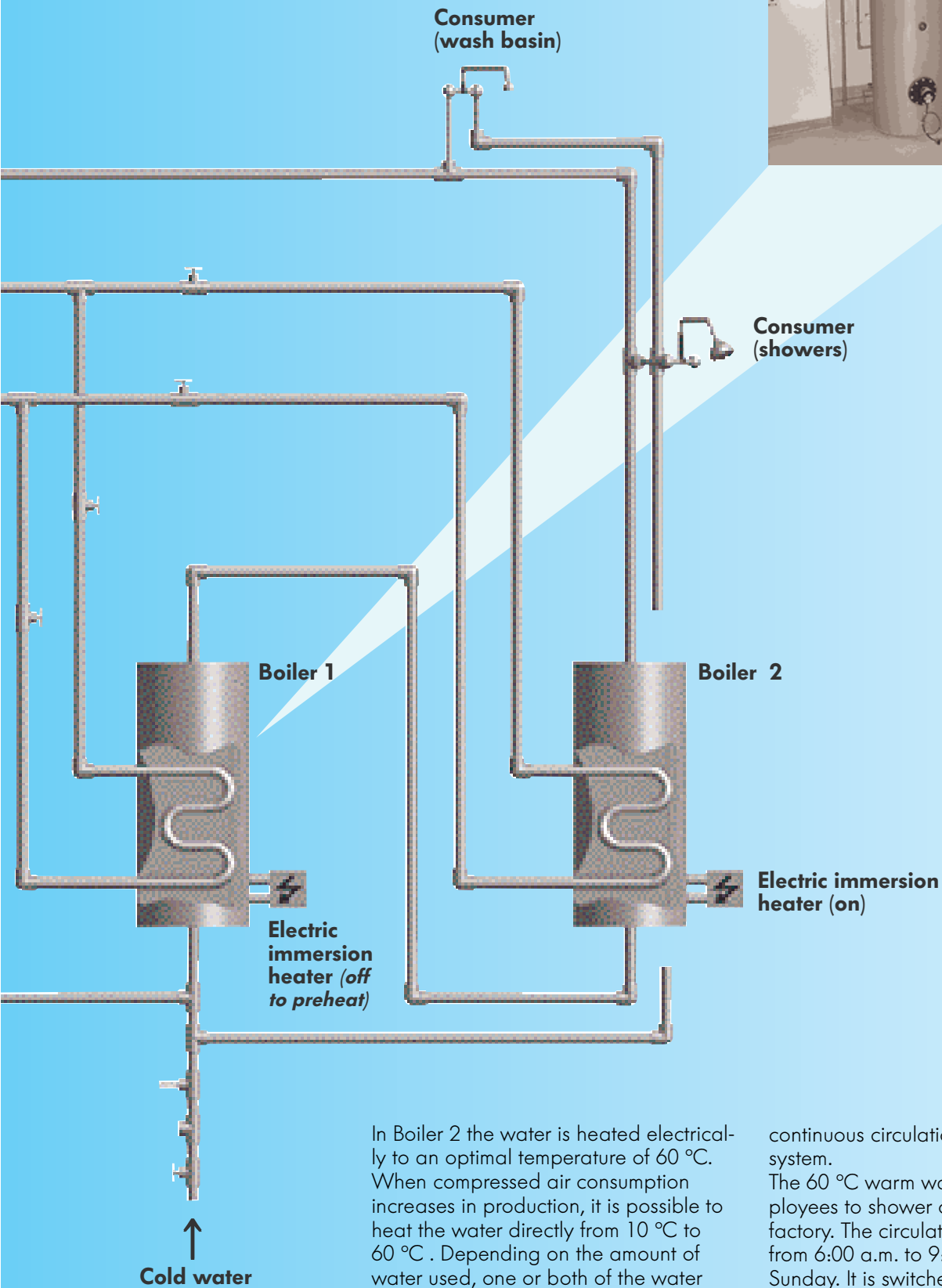
APPLICATION

Web address of Atlas Copco:
www.atlascopco.com

machines). The energy which is used for the compression process is converted into heat. The Atlas Copco energy recovery system is designed so that a large amount of the above mentioned heat can be recovered and used to heat water.

The compression heat is transferred from oil to water in a heat exchanger. The charge pump brings the water from the heat exchanger to Boiler 1, where the water is preheated. The charge pump only runs when the compressor system is being operated. It is controlled by a seven-day timer.





In Boiler 2 the water is heated electricaly to an optimal temperature of 60 °C. When compressed air consumption increases in production, it is possible to heat the water directly from 10 °C to 60 °C . Depending on the amount of water used, one or both of the water heaters (1000 l each) are in operation. If one should break down, the other can maintain operation in order to warrant

continuous circulation in the hot water system. The 60 °C warm water is used by employees to shower or wash up in the factory. The circulation pump operates from 6:00 a.m. to 9:00 p.m. Monday to Sunday. It is switched off at night for energy saving reasons.