

Rotameters

Price List June 16, 2001



Tubes in Polyamide and Polysulphone
End connectors in PVC, PP and PVDF
Seals in EPDM and FPM

GEORGE FISCHER +GF+

Table of Contents

Part Numbers and Prices

Ordering Information	4
Rotameters with Polyamide (PA) Tube, PVC Socket End Connectors	5
Rotameters with Polysulphone (PSU) Tube, PVC Socket End Connectors	6
Rotameters for Ambient UPW	7

Component Parts

End Connectors	8
Nuts	9
Flange Rings, Flange Adapters, O-Rings	10
Replacement Scales	11-13
Replacement Magnetic Floats	13

Accessories

Limit Switches	13
Sensor Type GK 05	13

Terms and Conditions of Sale	15
---	----

Ordering Information

All **PVC Socket** end UPW Rotameters have a standard nine digit part number.

All other configurations require a tube assembly, end connection and seal material part number. All flow ranges will be standard unless otherwise noted.

Rotameters are non-cancelable and non-returnable.

End Connection Options

- A** - PVC Threaded
- B** - PVC Flanged
- C** - PP Socket
- D** - PP Threaded
- E** - PP Flanged
- F** - PVDF Socket
- G** - PVDF Threaded
- H** - PVDF Flanged

Seal Options

- A** - EPDM
- B** - FPM

Please see p. 11-13 for other scales.

Please see p. 8-14 for component parts.

Accessories

limit switches: p. 13

Accuracy

3% of full scale

1% of measured range.

Pressure Range

Rated pressure: 150 psi at 68°F/20°C.

Temperature Range

PA and PSU with PVC ends:
32° to 140°F/0° to 60°C

PSU with PP ends:
32° to 194°F/0° to 90°C

PSU with PVDF ends:
32° to 212°F/0° to 100°C

Note: For reduced pressure ratings at elevated temperatures please use the appropriate George Fischer union material charts.

Example

A 2" PSU Rotameter with Polypropylene socket end connections, EPDM seals, with a non-magnetic float will have the following part number: **198 806 235 DA**

Tube Assembly	End Connection	Seal Material
198 806 235	D	A

PA (Polyamide) Tube Assembly Only (excluding end connectors, nuts and seals)

Inch Size	SK #	Scale Range GPM (Water)	Float Type Standard	\$	Float Type Magnetic	\$
Standard						
1	10	0.22–2.20	198 806 225	100.-	198 806 237	142.-
1	11	0.44–4.40	198 806 226	100.-	198 806 238	142.-
1-1/2	20	1.30–13.0	198 806 227	136.-	198 806 239	202.-
1-1/2	21	2.60–26.0	198 806 228	136.-	198 806 240	202.-
2	30	4.40–44.0	198 806 229	215.-	198 806 241	320.-
2	31	6.60–66.0	198 806 230	215.-	198 806 242	320.-
2-1/2	40	8.80–88.0	198 801 271	246.-	198 801 272	456.-
2-1/2	41	13.2–132	198 801 275	246.-	198 801 276	456.-

PSU (Polysulphone) Tube Assembly Only (excluding end connectors, nuts and seals)

Inch Size	SK #	Scale Range GPM (Water)	Float Type Standard	\$	Float Type Magnetic	\$
Short						
3/8	50	0.01–0.11	198 806 100	68.-	198 806 110	99.-
3/8	51	0.02–0.22	198 806 101	68.-	198 806 111	99.-
3/8	52	0.04–0.44	198 806 102	68.-	198 806 112	99.-
1/2	60	0.03–0.33	198 806 103	70.-	198 806 113	110.-
1/2	61	0.06–0.66	198 806 104	70.-	198 806 114	110.-
1/2	62	0.08–0.88	198 806 105	70.-	198 806 115	110.-
1	70	0.06–0.66	198 806 106	78.-	198 806 116	139.-
1	71	0.13–1.32	198 806 107	78.-	198 806 117	139.-
1	72	0.22–2.20	198 806 108	78.-	198 806 118	139.-
1	73	0.44–4.40	198 806 109	78.-	198 806 119	139.-
Standard						
1	10	0.22–2.20	198 806 231	108.-	198 806 243	153.-
1	11	0.44–4.40	198 806 232	108.-	198 806 244	153.-
1-1/2	20	1.30–13.0	198 806 233	148.-	198 806 245	222.-
1-1/2	21	2.60–26.0	198 806 234	148.-	198 806 246	222.-
2	30	4.40–44.0	198 806 235	232.-	198 806 247	379.-
2	31	6.60–66.0	198 806 236	232.-	198 806 248	379.-
2-1/2	40	8.80–88.0	198 801 273	259.-	198 801 274	492.-
2-1/2	41	13.2–132	198 801 277	259.-	198 801 278	492.-

Type 801



Standard version only.

Please see p. 11-13 for other scales.

Please see p. 8-14 for component parts.

Accessories

limit switches: p. 13

Accuracy

3% of full scale
1% of measured range.

Pressure Range

Rated pressure: 150 psi at
68°F/20°C.

Temperature Range

PA and PSU with PVC ends:
32° to 140°F/0° to 60°C

PSU with PP ends:
32° to 194°F/0° to 90°C

PSU with PVDF ends:
32° to 212°F/0° to 100°C

Note: For reduced pressure ratings at elevated temperatures please use the appropriate George Fischer union material charts.

Rotameters - PA (Polyamide) Tube

PVC Socket End Connectors (inch), Scales: %/GPM (Gallons per Minute)

EPDM Seals

(C)

Inch Size	SK #	Scale Range GPM	Float Type Standard	\$	Float Type Magnetic	\$
Standard						
1	10	0.22-2.20	198 807 622	113.-	198 807 630	155.-
1	11	0.44-4.40	198 807 623	113.-	198 807 631	155.-
1-1/2	20	1.30-13.0	198 807 624	157.-	198 807 632	223.-
1-1/2	21	2.60-26.0	198 807 625	157.-	198 807 633	223.-
2	30	4.40-44.0	198 807 626	242.-	198 807 634	347.-
2	31	6.60-66.0	198 807 627	242.-	198 807 635	347.-
2-1/2	40	8.80-88.0	198 807 628	395.-	198 807 636	605.-
2-1/2	41	13.2-132	198 807 629	395.-	198 807 637	605.-

(Complete Rotameter)

FPM Seals

(C)

Inch Size	SK #	Scale Range GPM	Float Type Standard	\$	Float Type Magnetic	\$
Standard						
1	10	0.22-2.20	198 807 638	117.-	198 807 646	159.-
1	11	0.44-4.40	198 807 639	117.-	198 807 647	159.-
1-1/2	20	1.30-13.0	198 807 640	167.-	198 807 648	233.-
1-1/2	21	2.60-26.0	198 807 641	167.-	198 807 649	233.-
2	30	4.40-44.0	198 807 642	254.-	198 807 650	359.-
2	31	6.60-66.0	198 807 643	254.-	198 807 651	359.-
2-1/2	40	8.80-88.0	198 807 644	416.-	198 807 652	626.-
2-1/2	41	13.2-132	198 807 645	416.-	198 807 653	626.-

(Complete Rotameter)

Type 801



* Short Version has one scale only.

Please see p. 11-13 for other scales.

Please see p. 8-14 for component parts.

Accessories

limit switches: p. 13

Accuracy

3% of full scale

1% of measured range.

Pressure Range

Rated pressure: 150 psi at 68°F/20°C.

Temperature Range

PA and PSU with PVC ends: 32° to 140°F/0° to 60°C

PSU with PP ends:

32° to 194°F/0° to 90°C

PSU with PVDF ends:

32° to 212°F/0° to 100°C

Note: For reduced pressure ratings at elevated temperatures please use the appropriate George Fischer union material charts.

Rotameters - PSU (Polysulphone) Tube

PVC Socket End Connectors (inch),

*Scales: %/GPM (Gallons per Minute)

EPDM Seals

(C)

Inch Size	SK #	Scale Range GPM	Float Type Standard	\$	Float Type Magnetic	\$
Short						
3/8	50	0.01-0.11	198 807 550	76.-	198 807 576	107.-
3/8	51	0.02-0.22	198 807 551	76.-	198 807 577	107.-
3/8	52	0.04-0.44	198 807 552	76.-	198 807 578	107.-
1/2	60	0.03-0.33	198 807 553	78.-	198 807 579	118.-
1/2	61	0.06-0.66	198 807 554	78.-	198 807 580	118.-
1/2	62	0.08-0.88	198 807 555	78.-	198 807 581	118.-
1	70	0.06-0.66	198 807 556	91.-	198 807 582	152.-
1	71	0.13-1.32	198 807 557	91.-	198 807 583	152.-
1	72	0.22-2.20	198 807 558	91.-	198 807 584	152.-
1	73	0.44-4.40	198 807 559	91.-	198 807 585	152.-
Standard						
1	10	0.22-2.20	198 807 560	121.-	198 807 568	166.-
1	11	0.44-4.40	198 807 561	121.-	198 807 569	166.-
1-1/2	20	1.30-13.0	198 807 562	169.-	198 807 570	243.-
1-1/2	21	2.60-26.0	198 807 563	169.-	198 807 571	243.-
2	30	4.40-44.0	198 807 564	259.-	198 807 572	406.-
2	31	6.60-66.0	198 807 565	259.-	198 807 573	406.-
2-1/2	40	8.80-88.0	198 807 566	408.-	198 807 574	641.-
2-1/2	41	13.2-132	198 807 567	408.-	198 807 575	641.-

(Complete Rotameter)

FPM Seals

(C)

Inch Size	SK #	Scale Range GPM	Float Type Standard	\$	Float Type Magnetic	\$
Short						
3/8	50	0.01-0.11	198 807 602	78.-	198 807 612	109.-
3/8	51	0.02-0.22	198 807 603	78.-	198 807 613	109.-
3/8	52	0.04-0.44	198 807 604	78.-	198 807 614	109.-
1/2	60	0.03-0.33	198 807 605	82.-	198 807 615	122.-
1/2	61	0.06-0.66	198 807 606	82.-	198 807 616	122.-
1/2	62	0.08-0.88	198 807 607	82.-	198 807 617	122.-
1	70	0.06-0.66	198 807 608	95.-	198 807 618	156.-
1	71	0.13-1.32	198 807 609	95.-	198 807 619	156.-
1	72	0.22-2.20	198 807 610	95.-	198 807 620	156.-
1	73	0.44-4.40	198 807 611	95.-	198 807 621	156.-
Standard						
1	10	0.22-2.20	198 807 586	125.-	198 807 594	170.-
1	11	0.44-4.40	198 807 587	125.-	198 807 595	170.-
1-1/2	20	1.30-13.0	198 807 588	179.-	198 807 596	253.-
1-1/2	21	2.60-26.0	198 807 589	179.-	198 807 597	253.-
2	30	4.40-44.0	198 807 590	271.-	198 807 598	418.-
2	31	6.60-66.0	198 807 591	271.-	198 807 599	418.-
2-1/2	40	8.80-88.0	198 807 592	419.-	198 807 600	652.-
2-1/2	41	13.2-132	198 807 593	419.-	198 807 601	652.-

(Complete Rotameter)

Rotameters PSU (Polysulphone) Tube for UPW (Ultra Pure Water)



- Solid PTFE Float
- White FPM O-rings
- PVDF BCF/IR Spigot Ends
- Scales: GPM (Gallons per Minute)/LPH (Liter per Hour) (C)

End size d mm	SK #	Flow Range		Part Number	\$
		GPM	LPH		
32	70	0.36-1.0	59-182	198 801 209	269.-
32	71	0.4-1.4	79-300	198 801 210	269.-
32	73	0.6-3.5	136-795	198 801 202	269.-
50	20	2.5-10.0	568-2273	198 801 203	470.-
50	21	4.0-18.0	909-4091	198 801 204	470.-
63	30	4.4-35.0	1000-8142	198 801 205	630.-
63	31	4.4-40.0	1000-9091	198 801 206	630.-
75 (IR only)	40	8.0-50.0	1848-11364	198 801 207	947.-
75 (IR only)	41	10.0-72.0	2273-16364	198 801 208	947.-

Please see p. 11-13 for other scales.

Accessories
limit switches: p. 13

Accuracy
3% of full scale
1% of measured range.

Pressure Range
Rated pressure: 150 psi at
68°F/20°C.

Temperature Range
PA and PSU with PVC ends:
32° to 140°F/0° to 60°C

PSU with PP ends:
32° to 194°F/0° to 90°C

PSU with PVDF ends:
32° to 212°F/0° to 100°C

Note: For reduced pressure ratings at elevated temperatures please use the appropriate George Fischer union material charts.

(Complete Rotameter)

These rotameters are compatible for both ambient and hot UPW systems.

Component Parts

PSU (Polysulphone) Tubes for Hot and Ambient UPW (C) with Flow Indicators and Scales: GPM (Gallons per Minute)/LPH (Liter per Hour)

End size d mm	Flow Range		Part Number	\$
	GPM	LPH		
32	0.6-3.5	136-795	700 251 574	62.-
50	2.5-10.0	568-2273	700 251 575	93.-
50	4.0-18.0	909-4091	700 251 576	93.-
63	4.4-35.0	1000-8142	700 251 577	129.-
63	4.4-40.0	1000-9091	700 251 578	129.-
75	8.0-50.0	1848-11364	700 251 579	229.-
75	10.0-72.0	2273-16364	700 251 580	229.-

Rotameters - Component Parts



PVC-Socket End Connectors (2 required) (B)

OD d mm	ID DN mm	Size Inch	PVC (inch)	\$	PVC (mm)	\$
16	10	3/8	721602005	1.20	721600105	1.20
20	15	1/2	721602006	1.20	721600106	1.20
32	25	1	721602008	1.40	721600108	1.40
50	40	1-1/2	721602010	3.30	721600110	3.30
63	50	2	721602011	4.70	721600111	4.70
75	65	2-1/2	700259430	20.50	721600112	10.50

PP-Socket End Connectors (2 required) (A)

OD d mm	ID DN mm	Size Inch	PP (mm)	\$
16	10	3/8	727600105	1.40
20	15	1/2	727600106	1.60
32	25	1	727600108	2.00
50	40	1-1/2	727600110	3.80
63	50	2	727600111	5.10
75	65	2-1/2	727600112	14.40

PVDF-Socket End Connectors (2 required) (A)

OD d mm	ID DN mm	Size Inch	PVDF (mm)	\$
16	10	3/8	735600105	5.70
20	15	1/2	735600106	6.00
32	25	1	735600108	8.60
50	40	1-1/2	735600110	12.70
63	50	2	735600111	17.60
75	65	2-1/2	735600112	29.00

PVC/PP/PVDF-Threaded End Connectors (2 required) (B)

OD d mm	ID DN mm	Size Inch	PVC FNPT	\$	PP FNPT	\$	PVDF FNPT	\$
20	15	1/2	721602656	2.00	198203603	14.50	198203611	18.30
32	25	1	721602658	4.50	198203604	15.90	198203612	27.60
50	40	1-1/2	721602660	8.30	198203606	19.40	198203614	44.00
63	50	2	721602661	8.60	198203607	21.60	198203615	52.90

(2-1/2 Threaded End Connectors not available)

Rotameters - Component Parts

PVC-Nuts (2 required)

(B)



OD d mm	ID DN mm	Size Inch	PVC	\$
16	10	3/8	721690005	1.50
20	15	1/2	721690006	1.70
32	25	1	721690008	2.80
50	40	1-1/2	721690010	5.00
63	50	2	721690011	6.40
75	65	2-1/2	198806423	60.90

PP-Nuts (2 required)

(A)

OD d mm	ID DN mm	Size Inch	PP	\$
16	10	3/8	727690405	5.10
20	15	1/2	727690406	5.80
32	25	1	727690408	7.10
50	40	1-1/2	727690410	14.70
63	50	2	727690411	23.70
75	65	2-1/2	198806421	137.00

PVDF-Nuts (2 required)

(A)

OD d mm	ID DN mm	Size Inch	PVDF	\$
16	10	3/8	735690405	7.30
20	15	1/2	735690406	9.30
32	25	1	735690408	15.60
50	40	1-1/2	735690410	31.50
63	50	2	735690411	49.10
75	65	2-1/2	198806422	137.00

Rotameters - Component Parts



PVC Flanges ANSI (2 required)

(A)

OD d mm	ID DN mm	Size Inch	PVC Flange ANSI, complete with adaptor	\$
20	15	1/2	856005	3.40
32	25	1	856010	4.00
50	40	1-1/2	856015	5.60
63	50	2	856020	6.50
75	65	2-1/2	856025	12.00

Flange bolt holes drilled in accordance with ANSI B16.5 Class 150 pattern

PVC-Coated Steel Flange Rings for PP or PVDF (2 required)

(B)

OD d mm	ID DN mm	Size Inch	PVC-Coated Steel Flange Rings for PP or PVDF	\$
20	15	1/2	155701806	11.70
32	25	1	155701808	17.20
50	40	1-1/2	155701810	24.70
63	50	2	155701811	30.60
75	65	2-1/2	155701812	34.00

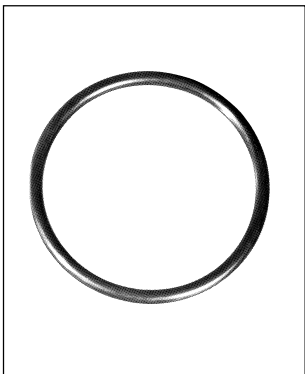
Flange bolt holes drilled in accordance with ANSI B16.5 Class 150 pattern



Flange Adapters, serrated face (2 required)

(A)

OD d mm	ID DN mm	Size Inch	PP ANSI	\$	PVDF ANSI	\$
20	15	1/2	727798506	3.60	735798606	5.00
32	25	1	727798658	4.40	735798658	6.30
50	40	1-1/2	727798660	6.60	735798660	11.90
63	50	2	727798511	8.00	735798611	19.00
75	65	2-1/2	727798512	9.40	735798602	44.10

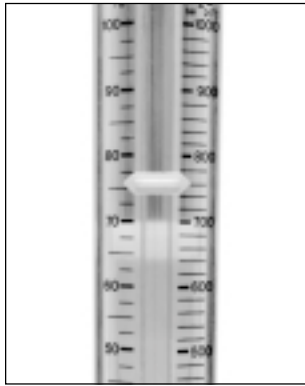


O-Rings (2 required)

(B)

OD d mm	ID DN mm	Size Inch	EPDM	\$	FPM	\$
16	10	3/8	748410005	1.10	749410005	2.20
20	15	1/2	748410006	1.10	749410006	3.10
32	25	1	748410008	2.20	749410008	4.30
50	40	1-1/2	748410010	2.20	749410010	7.40
63	50	2	748410011	2.30	749410011	8.50
75	65	2-1/2	748410014	3.00	749410014	13.50

Rotameters - Component Parts



Standard Scales

(C)

Inch Size	Scale SK #	Percentage (Liquids & Air)			Water: Specific Gravity: 1		
		% Range	Part Number	\$	m ³ /hour Range	Part Number	\$
1	10	10%–100%	198802076	7.-	0.05–0.5	198801937	7.-
1	11	10%–100%	198802077	7.-	0.1–1.0	198801938	7.-
1-1/2	20	10%–100%	198802078	7.-	0.3–3.0	198801939	7.-
1-1/2	21	10%–100%	198802079	7.-	0.6–6.0	198801940	7.-
2	30	10%–100%	198802080	7.-	1.0–10.0	198801941	7.-
2	31	10%–100%	198802081	7.-	1.5–15.0	198801942	7.-
2-1/2	40	10%–100%	198802082	7.-	2.0–20.0	198801318	7.-
2-1/2	41	10%–100%	198802083	7.-	3.0–30.0	198801319	7.-

All Rotameters have dual scale capability. Short version has one scale only.

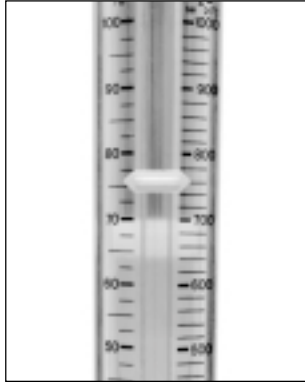
Scales for Water

(C)

Inch Size	Scale SK #	Water: Specific Gravity: 1					
		GPM Range	Part Number	\$	LPH Range	Part Number	\$
Short							
3/8	50	0.01–0.11	198801961	7.-	2.5–25	198801386	7.-
3/8	51	0.02–0.22	198801962	7.-	5–50	198801387	7.-
3/8	52	0.04–0.44	198801963	7.-	10–100	198801388	7.-
1/2	60	0.03–0.33	198801964	7.-	8–80	198801389	7.-
1/2	61	0.06–0.66	198801965	7.-	15–150	198801390	7.-
1/2	62	0.08–0.88	198801966	7.-	20–200	198801391	7.-
1	70	0.06–0.66	198801967	7.-	15–150	198801392	7.-
1	71	0.13–1.32	198801968	7.-	30–300	198801393	7.-
1	72	0.22–2.20	198801969	7.-	50–500	198801394	7.-
1	73	0.44–4.40	198801970	7.-	100–1000	198801395	7.-
Standard							
1	10	0.22–2.20	198801949	7.-	50–500	198801955	7.-
1	11	0.44–4.40	198801950	7.-	100–1000	198801956	7.-
1-1/2	20	1.30–13.0	198801951	7.-	300–3000	198801957	7.-
1-1/2	21	2.60–26.0	198801952	7.-	600–6000	198801958	7.-
2	30	4.40–44.0	198801953	7.-	1000–10,000	198801959	7.-
2	31	6.60–66.0	198801954	7.-	1500–15,000	198801960	7.-
2-1/2	40	8.80–88.0	198801320	7.-	2000–20,000	198801876	7.-
2-1/2	41	13.2–132.0	198801321	7.-	3000–30,000	198801877	7.-

Type 801

Rotameters - Component Parts



Special Scales for Liquids – NaOH (GPM)

(C)

Inch Size	Scale SK #	NaOH 30%			NaOH 50%		
		GPM Range	Part Number	\$	GPM Range	Part Number	\$
1	10	0.066–1.05	198801477	18.-	0.008–0.26	198801485	18.-
1	11	0.22–2.65	198801478	18.-	0.04–0.84	198801486	18.-
1-1/2	20	0.88–8.80	198801479	18.-	0.22–4.4	198801487	18.-
1-1/2	21	2.20–19.85	198801480	18.-	0.44–11.0	198801488	18.-
2	30	2.20–33.0	198801481	18.-	0.44–21.0	198801489	18.-
2	31	3.52–48.0	198801482	18.-	1.32–30.8	198801490	18.-
2-1/2	40	6.16–66.0	198801483	18.-	2.20–48.4	198801491	18.-
2-1/2	41	8.8–88.0	198801484	18.-	4.40–61.6	198801492	18.-

All Rotameters have dual scale capability. Short version has one scale only.

Special Scales for Liquids – NaOH (LPH)

(C)

Inch Size	Scale SK #	NaOH 30%			NaOH 50%		
		LPH Range	Part Number	\$	LPH Range	Part Number	\$
1	10	15–240	198801296	18.-	2–60	198801302	18.-
1	11	50–600	198801297	18.-	10–190	198801303	18.-
1-1/2	20	200–2000	198801298	18.-	50–1000	198801304	18.-
1-1/2	21	500–4500	198801299	18.-	100–2500	198801305	18.-
2	30	500–7500	198801300	18.-	100–4750	198801306	18.-
2	31	800–11000	198801301	18.-	300–7000	198801307	18.-
2-1/2	40	1400–15000	198801326	18.-	500–10000	198801328	18.-
2-1/2	41	2000–20000	198801327	18.-	1000–14000	198801329	18.-

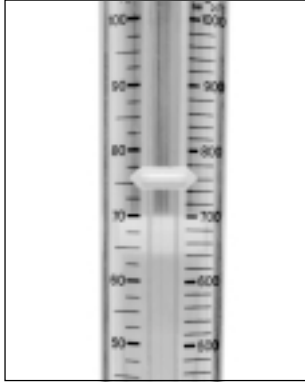
Special Scales for Liquids – HCl (GPM/LPH) for use with magnetic floats

(C)

Inch Size	Scale SK #	HCl 30%–33%			HCl 30%–33%		
		GPM Range	Part Number	\$	LPH Range	Part Number	\$
1	10	0.22–1.98	198801469	18.-	50–450	198801290	18.-
1	11	0.66–3.95	198801470	18.-	50–900	198801291	18.-
1-1/2	20	2.2–11.0	198801471	18.-	500–2500	198801292	18.-
1-1/2	21	3.1–22.0	198801472	18.-	700–5000	198801293	18.-
2	30	3.1–37.5	198801473	18.-	700–8500	198801294	18.-
2	31	4.4–52.9	198801474	18.-	1000–18000	198801295	18.-
2-1/2	40	8.8–88.0	198801475	18.-	2000–18000	198801324	18.-
2-1/2	41	15.8–110.0	198801476	18.-	3600–25000	198801325	18.-

Type 801

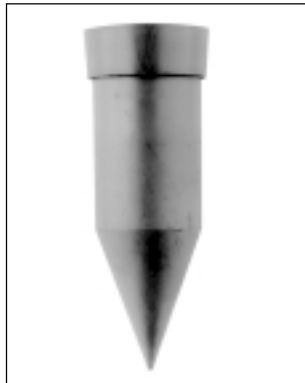
Rotameters - Component Parts



Special Scales for Air

(C)

Inch Size	Scale SK#	Air 14.7 psi (1 bar)					\$
		SCFM Range	Part Number		Nm³/hr Range	Part Number	
1	10	1.2-10.0	198801356	18.-	2.1-16	198801284	18.-
1	11	2.5-18.8	198801357	18.-	4.2-32	198801285	18.-
1-1/2	20	7.0-52.9	198801358	18.-	12.1-90	198801286	18.-
1-1/2	21	12.5-104	198801359	18.-	21.1-177	198801287	18.-
2	30	20-162.5	198801360	18.-	34.2-276	198801288	18.-
2	31	30-245	198801361	18.-	49.6-414	198801289	18.-
2-1/2	40	38-405	198801362	18.-	34.2-276	198801322	18.-
2-1/2	41	60-512	198801363	18.-	49.6-414	198801323	18.-



Magnetic Floats - Orange (for use with limit switches)

(C)

OD d mm	ID DN mm	Size Inch	Tube Sizes	Part Number	\$
32	25	3/8 Short	SK50-52	198806222	74.-
20	15	1/2 Short	SK60-62	198806223	83.-
32	25	1 Short	SK70-73	198806224	100.-
32	25	1 Standard	SK10/11	198801980	105.-
50	40	1-1/2 Standard	SK20/21	198801981	137.-
63	50	2 Standard	SK30/31	198801982	235.-
75	65	2-1/2 Standard	SK40	198801988	282.-
75	65	2-1/2 Standard	SK41	198801345	282.-



Accessories - Limit Switches

(C)

Tube Type	Product Description	Part Number	\$
Short Version	Maximum Limit Switch	198801878	46.-
Short Version	Minimum Limit Switch	198801879	46.-
Standard	Maximum or Minimum Switch	198801936	46.-

Connection: Standard plug DIN 43650
 Contact: Bistable reed contact
 Protection: NEMA 4X

Max. Voltage: 250 VAC
 Max. continuous Current: 0.2A
 Peak switch-on Current: 0.5A



4 - 20 mA Sensor Type GK 05

(C)

(Transmitter kit for standard tubes only)

OD d mm	ID DN mm	Size Inch	Tube Sizes	Product Description	Part Number	\$
32	25	1	SK10/11	4 - 20 mA sensor and magnetic PVDF float	199190334	346.-
50	40	1-1/2	SK20/21		199190335	348.-
63	50	2	SK30/31		199190336	365.-
75	65	2-1/2	SK40		199190337	428.-
75	65	2-1/2	SK41		199190338	428.-

General Terms and Conditions of Sale

These Terms and Conditions (Rev. 6/2003) supercede all previous Terms and Conditions.

It is the responsibility of the Distributor, Dealer, Agent to provide a current copy of these Terms and Conditions to the Consumers of George Fischer products.

• Acceptance of Terms and Conditions

Acceptance by Customer of George Fischer, Inc.'s (hereinafter "Seller" or "GFI") offer of Products for sale is hereby expressly conditioned upon Customer's acceptance of these General Terms and Conditions of Sale and these General Terms and Conditions of Sale will be deemed accepted, as written, despite any language in Customer's purchase order and/or other documentation which is either conflicting or supplemental, unless promptly after receipt of this offer, Customer specifically advises Seller of each term and condition not so accepted and Seller accepts Customer's conflicting and/or supplemental term(s) in writing.

• Order Acceptance

Seller reserves the right to accept or reject any order. Possession of a price list by Customer does not constitute an offer to sell.

• Credit Approval/Minimum Order Charge

Customer credit approval is required prior to any shipments. The minimum order charge is \$100.00 net.

• List Price, Discount or Freight Charges

List prices, discount, and freight terms are subject to change without notice. All prices are F.O.B., Seller's factory or authorized warehouse at Seller's discretion. Products listed hereon will be invoiced at price prevailing at time of shipment.

• Standard Terms

Net 30, 2% 15 days from date the invoice is issued from GFI. **No unauthorized deductions allowed, such as deductions for pending Returned Materials Transactions that are subject to review.** GFI reserves the right to apply a finance charge to the balance of any past-due invoice (over 30 days from date of invoice) at a rate of 1.5% per month, 18% per annum. Invoices past due forty-five (45) days will be subject to review and account status may be put on hold.

• Mode of Shipment or Packaging

Seller reserves the right to ship orders in the most economical manner. However, where Customer requests special packaging or handling, any additional cost will be the responsibility of the Customer.

• Taxes

Any and all sales taxes, Manufacturer's taxes and/or other charges levied or imposed by any governmental authority, foreign or domestic, upon any merchandise sold or contracted to be sold shall be paid by Customer and added to the purchase price unless satisfactory and appropriate tax exemption certificates are supplied to the Seller.

• Cancellations or Add-ons

Cancellation or modifications of orders must be consented to by Manufacturer in writing. Since all orders are individually entered for processing immediately upon receipt, Seller reserves the right to charge back to the Customer costs incurred from either cancellation of the order, change of the order or of any item on the order. Seller also reserves the right to consider all order add-ons as new orders and subject to all terms and conditions. Products can only be added to orders the same day the order was entered. Distributors may cancel stock items that are **NOT** non-cancelable or non-returnable up to the day it ships.

• Product Changes

Seller reserves the right to alter, modify or redesign its products without any obligation to replace Products previously shipped.

• Delivery

Customer is advised that quoted delivery dates or schedules are based on estimates at the time of quotation and that Seller will devote its best efforts to meet such schedules. However, Seller assumes no liability for additional cost or damages resulting from late deliveries.

• Freight Terms

In the continental USA and Canada: Full freight will be paid on pipe, valve, and fitting orders \$1,500 net or more, except PVDF pipe in which full freight will be paid on orders of \$4,000 net or more. Freight allowed orders will be sent by a designated carrier of Seller's choice. Additional charges will be made for special handling and air freight when requested.

All Signet products are shipped F.O.B. factory. Unless otherwise specified, shipments are UPS surface; prepaid and added to the invoice.

• Transfer of Ownership

Title to merchandise passes at point of shipment. Claims for damaged merchandise should be made to carrier.

• Damage, Loss or Shortage Claims

Common carrier or motor freight shipment must be inspected for damage, loss or shortage upon receipt by consignee prior to acceptance from carrier.

Any damage or loss claims must be made to the carrier. Seller will not be liable in any manner for damage or loss caused to a shipment by a common carrier.

Shortage of material claims regardless of "mode of shipment" must be submitted in writing to Seller within fifteen (15) days of invoice date. In the event of such claims, Customer shall be required to make timely payment to Seller of any amount which is undisputed or not subject to such claims.

• Returned Materials – Restock and Evaluations

The standard restocking charge is 25%. Products denoted with a caret (^) symbol have a 40% restocking charge and products with an asterisk (*) symbol are non-cancelable/non-returnable. Only items identified on the current Master Distributor Price list shall be considered for returns and credits. All products qualifying for return are subject to review for marketability (quantities and stock movement) before issuance of an RMA number.

All merchandise returned for credit must have been purchased from George Fischer within the past twelve (12) months, and must be in original packaging (full carton quantities), in "like new," re-sellable, condition.

Credit will be allowed at the lowest price in effect during the previous twelve (12) months, unless a higher price can be substantiated by the distributor. The minimum acceptable return is \$100 net. **No deductions may be taken prior to GFI issuing a credit memo.**

All material returns must be accompanied by a valid GFI Return

Material Authorization (RMA) number. Obtain the RMA number by contacting the GFI Customer Service department. When requesting restock, the original purchase order number or GFI Sales Order number and date of purchase from GFI must be provided. When requesting an RMA for material evaluation, the customer must first complete a Material Safety Disclosure sheet and Request For Evaluation form; both are obtained from GFI Customer Service.

Material arriving at George Fischer without a valid RMA number will be returned to the customer/distributor, freight collect. RMA numbers must be clearly referenced on all shipping documents and shipping container.

All material returns must be received within thirty (30) days of the RMA issuance from GFI. **RMA numbers are void after 30 days.**

All material returns must be shipped freight prepaid. **No collect shipments will be accepted by George Fischer.** Restocking charges and prepaid freight do not apply to warranty defective merchandise or returns due to GFI order entry or shipping errors. **Seller must be advised of shipment errors within 15 days of shipping from GFI.**

• Force Majeure

Seller shall not be liable for any delays in making delivery where occasioned by strikes or difference with workmen or by any causes beyond the control of Seller, such as but not limited to fires, floods, accidents, action of any governmental authority, or shortages of labor, energy, raw materials, production facilities or transportation. Where delays or failures of delivery are caused by labor difficulties, Seller shall not be obligated to seek or obtain any settlement which, in Seller's sole judgment is not in Seller's best interest.

• WARRANTY

Seller's Products are carefully inspected for manufacturing defects; however, it is not always possible to detect hidden defects.

Said Products are warranted only to the extent that Seller will repair or replace without charge. (No credits will be issued.) Products proved to have manufacturing defects within six (6) months, Signet products twenty-four (24) months, of the date of tender of delivery thereof and provided Seller has been given an opportunity to inspect the Product alleged to be defective and the installation and/or use thereof. Seller does not warrant any Products obtained through an unauthorized Distributor, Dealer or Agent; therefore any and all warranties are void in the event that Seller's Products are obtained through an unauthorized Distributor, Dealer or Agent.

• LIMITATIONS OF REMEDY

Damages, warranties and liability in the event of any breach of warranty by seller, the exclusive remedy of the customer shall be the repair or replacement of the non-conforming goods in the manner and for the period of time as provided in the "warranty" section above. No warranty is included against any expense for removal, reinstallation or consequential damages of any nature arising from any defect. Seller shall not be liable for special, incidental or consequential damages, such as (but not limited to) damage or loss of other property or equipment, business interruption, or loss of profits or revenue. The warranties set out above are the only warranties made by seller and are expressly in lieu of all other warranties, expressed or implied, including the warranties of merchantability and fitness for a particular purpose. Any and all warranties implied by any course of dealing or usage of trade between the parties are expressly excluded. Any action for breach of any contract made by seller for the sale of goods must be commenced within twelve (12) months (Signet Products twenty-four (24) months) of seller's tender of delivery of the subject goods.

George Fischer Product Lines

High Purity Piping Systems

SYGEF® PVDF & SYGEF® HP PVDF

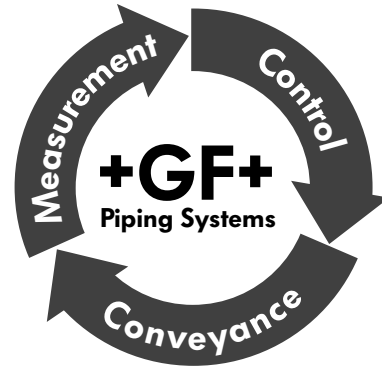
+GF+ SIGNET HP Flow Measurement System

Beta Polypropylene (metric)

Sigma Natural Polypropylene (metric)

Semifinished Products

Fusion Technologies (BCF, IR, socket fusion)



Industrial Piping Systems

Schedule 40 PVC Fittings

+GF+ Hi-Strength Schedule 80 PVC and CPVC Piping Systems

+GF+ PPro-Seal Natural Polypropylene Piping System

+GF+ Fuseal Corrosive Waste Piping System

+GF+ Contain-It Secondary Containment Piping System

Manual & Actuated Valves

Solenoid Valves

Pressure Regulating Valves

+GF+ SIGNET Flow and Analytical Instrumentation

Rotameters

Custom Products

Custom Specialty Components and Assemblies

CALORPLAST Heat Exchangers

+GF+, PPro-Seal, Fuseal, Contain-it, and SIGNET are registered trademarks.

Visit our website or call (800) 854-4090 for our complete engineering handbook on above product lines.

GEORGE FISCHER +GF+