

+GF+ Fuseal Squared
Price List Effective July 29, 2002



**Double Containment Polypropylene
Corrosive Waste Piping System**

**Electrofusion Secondary Containment
System in Polypropylene**

GEORGE FISCHER +GF+

George Fischer Piping Systems U.S.A.

The Piping Systems Group U.S.A. within the George Fischer Corporation is dedicated to the development, procurement, manufacture, sales and marketing of plastic piping systems in the Americas.

George Fischer is not only a leading provider of high quality piping systems products, but also offers specific system solutions in a wide range of industries. Our components for the conveyance, measurement, and control of liquids are always an integral part of complete solutions.

Because of the unique diversity of our product range, you'll find George Fischer products in many industries, including chemical processing, semiconductor, pharmaceutical, food, photographic, environmental technology, waste water treatment, and water distribution.

George Fischer offers user-related support, a nationwide stocking distribution network, installer training, and comprehensive documentation. Our area sales engineers are always on hand for support and consultation from the design to the installation phase of a project, today and in the future.

George Fischer, Inc. Tustin, California



George Fischer, Inc. is the sales facility of George Fischer high purity and industrial products in the Americas. The Tustin location offers customer and technical support, performs valve assembly, heat exchanger fabrication and distribution of George Fischer valves and piping systems. A Class 10,000 clean room offers custom fabrication of specialty components for the ultrapure water market.

Signet Scientific Company El Monte, California



Signet Scientific is the engineering, manufacturing, and distribution facility for +GF+ SIGNET instrumentation.

George Fischer Sloane, Inc. Little Rock, Arkansas



George Fischer Sloane is the engineering, manufacturing, and distribution facility for industrial piping systems.

The technical information given in this publication implies no warranty of whatever kind and is subject to change without notice. Please consult our Terms and Conditions of Sale.

Table of Contents

Pipes	4
Fittings	4
MSA 250SE	8
Notes	8
Terms and Conditions.....	11

Not for Use with Compressed Air or Gases

George Fischer, Inc. DOES NOT RECOMMEND the use of thermoplastic piping products for systems to transport or store compressed air or gases, or the testing of thermoplastic piping systems with compressed air or gases in above or below ground locations. The use of George Fischer, Inc. products in compressed air or gas systems automatically voids George Fischer, Inc. warranty for such products, and their use against our recommendation is entirely the responsibility and liability of the installer. George Fischer, Inc. will not accept responsibility for damage or impairment from its products, or other consequential or incidental damages caused by misapplication, incorrect assembly, and/or exposure to harmful substances or conditions.

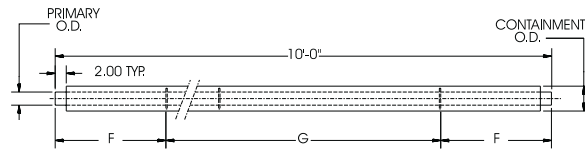
F.O.B Plant/freight
paid by customer

P/L: 56 (Pipe),
55 (Fittings)

Material: Non-flame
retardant
polypropylen

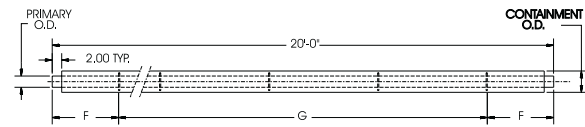
Fuseal Squared

Double Containment Pipe 10'



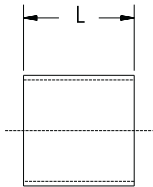
Size	Part Number	\$ per foot	mp	lbs each	Primary O.D.	Containment O.D.	F	G
1-1/2x4	PB014-015AA	26.88	10	17.0	1.900	4.500	1'-8"	2sps@40"=6'-8"
2x4	PB014-020AA	29.57	10	18.0	2.375	4.500	1'-8"	2sps@40"=6'-8"
3x6	PB014-030AA	43.01	10	33.0	3.500	6.625	1'-8"	2sps@40"=6'-8"
4x8	PB014-040AA	48.39	10	50.0	4.500	8.625	1'-8"	2sps@40"=6'-8"
6x10	PB014-060AA	69.89	10	75.0	6.625	10.750	1'-8"	2sps@40"=6'-8"
8x12	PB014-080AA	96.77	10	105.0	8.625	12.750	1'-8"	2sps@40"=6'-8"

Double Containment Pipe 20'



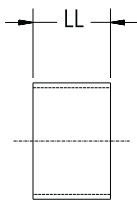
Size	Part Number	\$ per foot	mp	lbs each	Primary O.D.	Containment O.D.	F	G
1-1/2x4	PB014-015AB	26.88	20	34.0	1.900	4.500	2'-0"	4sps@48"=16'-0"
2x4	PB014-020AB	29.57	20	36.0	2.375	4.500	2'-0"	4sps@48"=16'-0"
3x6	PB014-030AB	43.01	20	66.0	3.500	6.625	2'-6"	3sps@60"=15'-0"
4x8	PB014-040AB	48.39	20	100.0	4.500	8.625	2'-6"	3sps@60"=15'-0"
6x10	PB014-060AB	69.89	20	150.0	6.625	10.750	2'-6"	3sps@60"=15'-0"
8x12	PB014-080AB	96.77	20	210.0	8.625	12.750	2'-6"	3sps@60"=15'-0"

Extended Sleeve Coupling



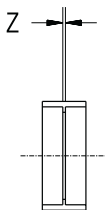
Size	Part Number	\$	mp	lbs each	L each
4	557004	59.14	2	0.9	6.00
6	557006	69.89	2	2.0	8.00
8	557008	123.66	2	2.5	8.00
10	557010	188.17	2	4.0	11.50
12	557012	215.05	2	7.0	11.50

Sleeve Coupling



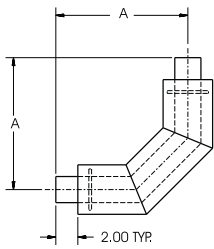
Size	Part Number	\$	mp	lbs each	LL each
4	557404	20.43	2	0.6	2.25
6	557406	23.66	2	0.8	3.00
8	557408	59.14	2	1.2	4.00
10	557410	94.62	2	2.0	5.75
12	557412	107.53	2	3.5	5.75

Standard Coupling



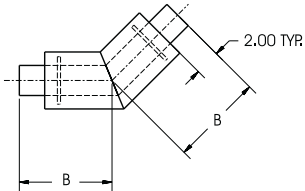
Size	Part Number	\$	mp	lbs each	Z each
1-1/2	527001	18.22	50	0.1	0.06
2	527002	22.74	45	0.1	0.06
3	527003	29.10	60	0.4	0.13
4	527004	41.40	20	0.6	0.13
6	527006	65.61	10	0.8	0.19
8	7008	175.00	5	1.2	0.25

1/4 Bend



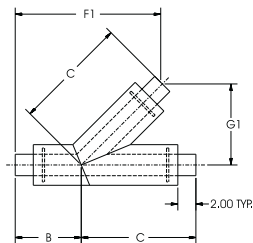
Size	Part Number	\$	mp	lbs each	A each
1-1/2x4	556251	215.05	1	3.0	12.00
2x4	556252	215.05	1	3.0	12.00
3x6	556253	274.19	1	6.0	13.00
4x8	556254	473.12	1	10.0	14.00
6x10	556256	591.40	1	15.0	16.00
8x12	556258	806.45	1	22.0	18.00

1/8 Bend



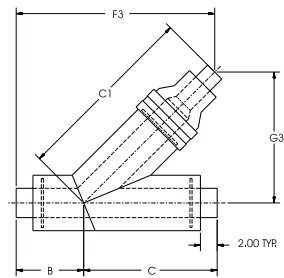
Size	Part Number	\$	mp	lbs each	B each
1-1/2x4	556501	177.42	1	2.0	7.31
2x4	556502	177.42	1	2.0	7.31
3x6	556503	215.05	1	4.0	8.06
4x8	556504	349.46	1	6.5	8.66
6x10	556506	462.37	1	10.0	9.50
8x12	556508	607.53	1	14.5	10.25

45° Wye



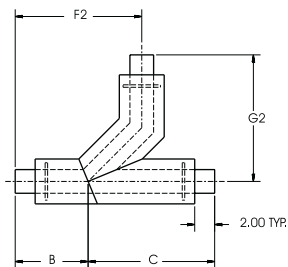
Size	Part Number	\$	mp	lbs each	B	C	F1	G1
1-1/2x4	556301	553.76	1	5.0	7.31	12.69	16.28	8.97
2x4	556302	553.76	1	5.0	7.31	12.69	16.28	8.97
3x6	556303	591.40	1	10.0	8.06	15.94	19.33	11.27
4x8	556304	725.81	1	16.5	8.66	17.34	20.92	12.25
6x10	556306	860.22	1	25.0	9.50	22.50	25.41	14.50
8x12	556308	1182.80	1	36.5	10.25	23.75	27.04	16.75

45° Reducing Wye



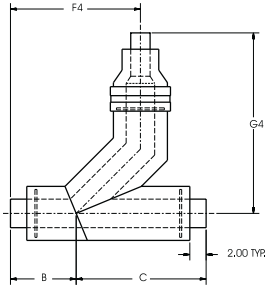
Size	Part Number	\$	mp	lbs	B each	C	C1	F3	G3
2x4 / 1-1/2x4	556322	698.92	1	5.5	7.31	12.69	12.82	16.90	9.59
3x6 / 1-1/2x4	556323	752.69	1	12.0	8.06	15.94	22.12	23.71	15.65
3x6 / 2x4	556324	752.69	1	12.0	8.06	15.94	22.12	23.71	15.65
4x8 / 2x4	556325	913.98	1	20.0	8.66	17.34	23.62	25.36	16.70
4x8 / 3x6	556326	913.98	1	20.0	8.66	17.34	23.62	25.36	16.70
6x10 / 3x6	556327	1290.32	1	31.0	9.50	22.50	30.75	31.25	21.75
6x10 / 4x8	556328	1290.32	1	31.0	9.50	22.50	30.75	31.25	21.75
8x12 / 4x8	556329	1881.72	1	45.5	10.25	23.75	32.00	32.88	22.62
8x12 / 6x10	556330	1881.72	1	45.5	10.25	23.75	32.00	32.88	22.62

Combo Wye & 1/8 Bend



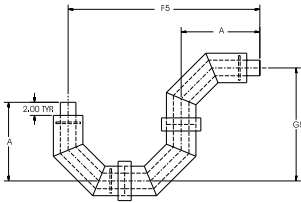
Size	Part Number	\$	mp	lbs each	B	C	F2	G2
1-1/2x4	557301	688.17	1	6.5	7.31	12.69	12.69	12.69
2x4	557302	688.17	1	6.5	7.31	12.69	12.69	12.69
3x6	557303	774.19	1	12.5	8.06	15.94	15.94	15.94
4x8	557304	887.10	1	20.0	8.66	17.34	17.34	17.34
6x10	557306	1129.03	1	30.0	9.50	22.50	22.50	22.50
8x12	557308	1505.38	1	45.0	10.25	23.75	23.75	23.75

Combo Wye & 1/8 Bend - Reducing



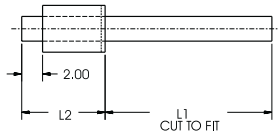
Size	Part Number	\$	mp	lbs each	B	C	F4	G4
2x4 / 1-1/2x4	557322	698.92	1	7.0	7.31	12.69	12.69	12.69
3x6 / 1-1/2x4	557323	860.22	1	14.5	8.06	15.94	15.94	22.12
3x6 / 2x4	557324	860.22	1	14.5	8.06	15.94	15.94	22.12
4x8 / 2x4	557325	1075.27	1	23.5	8.66	17.34	17.34	23.62
4x8 / 3x6	557326	1075.27	1	23.5	8.66	17.34	17.34	23.62
6x10 / 3x6	557327	1612.90	1	36.0	9.50	22.50	22.50	30.75
6x10 / 4x8	557328	1612.90	1	36.0	9.50	22.50	22.50	30.75
8x12 / 4x8	557329	2258.06	1	54.0	10.25	23.75	23.75	32.00
8x12 / 6x10	557330	2258.06	1	54.0	10.25	23.75	23.75	32.00

P - Trap



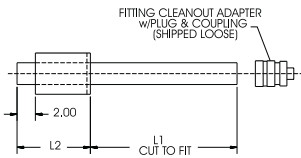
Size	Part Number	\$	mp	lbs each	A	F5	G5
1-1/2x4	557201	752.69	1	10.0	12.00	29.25	17.25
2x4	557202	752.69	1	10.0	12.00	29.25	17.25
3x6	557203	967.74	1	19.5	13.00	35.43	22.43
4x8	557204	1397.85	1	31.5	14.00	38.75	24.75
6x10	557206	1935.48	1	48.0	16.00	46.25	30.25
8x12	557208	2580.65	1	70.0	18.00	52.25	34.25

Termination Fitting



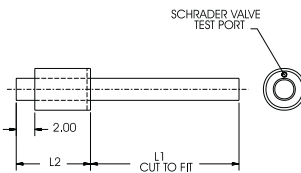
Size	Part Number	\$	mp	lbs each	L1	L2
1-1/2x4	558001	215.05	1	1.5	16.00	8.00
2x4	558002	215.05	1	2.0	16.00	8.00
3x6	558003	236.56	1	3.5	16.00	8.00
4x8	558004	268.82	1	5.0	16.00	8.00
6x10	558006	349.46	1	8.0	16.00	8.00
8x12	558008	430.11	1	11.0	16.00	8.00

Fitting Cleanout Adapter with Plug Assembly



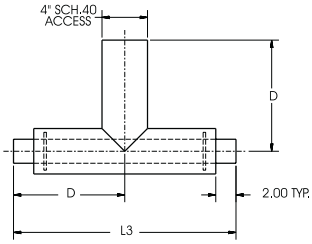
Size	Part Number	\$	mp	lbs each	L1	L2
1-1/2x4	557701A	215.05	1	2.0	16.00	8.00
2x4	557702A	215.05	1	2.5	16.00	8.00
3x6	557703A	236.56	1	4.0	16.00	8.00
4x8	557704A	268.82	1	5.5	16.00	8.00
6x10	557706A	349.46	1	8.5	16.00	8.00
8x12	557708A	430.11	1	12.0	16.00	8.00

Test Fitting



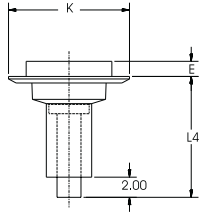
Size	Part Number	\$	mp	lbs each	L1	L2
1-1/2x4	558501	215.05	1	1.5	16.00	8.00
2x4	558502	215.05	1	2.0	16.00	8.00
3x6	558503	236.56	1	3.5	16.00	8.00
4x8	558504	268.82	1	5.0	16.00	8.00
6x10	558506	349.46	1	8.0	16.00	8.00
8x12	558508	430.11	1	11.0	16.00	8.00

Access Tee (4" Schedule 40 Access)



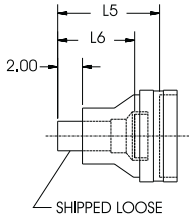
Size	Part Number	\$	mp	lbs each	D	L3
1-1/2x4	557901	322.58	1	5.0	11.00	22.00
2x4	557902	322.58	1	5.5	11.00	22.00
3x6	557903	376.34	1	8.0	13.00	26.00
4x8	557904	430.11	1	11.5	13.00	26.00
6x10	557906	591.40	1	16.5	17.00	34.00
8x12	557908	645.16	1	22.0	17.00	34.00

Floor Drain



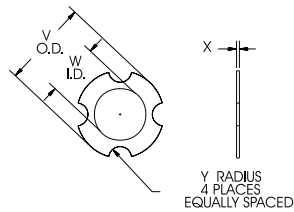
Size	Part Number	\$	mp	lbs each	E	K	L4
2x4	557752	483.87	1	5.5	1.63	12.00	12.00
3x6	557753	537.63	1	6.0	1.63	12.00	12.00
4x8	557754	698.92	1	7.0	1.63	12.00	12.00

Pipe Increaser



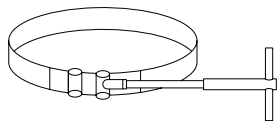
Size	Part Number	\$	mp	lbs each	L5	L6
2x4 / 1-1/2x4	557022	430.11	1	0.2	0.53	
3x6 / 1-1/2x4	557023	483.87	1	2.0	8.19	6.19
3x6 / 2x4	557024	483.87	1	2.0	8.19	6.19
4x8 / 2x4	557025	645.16	1	3.5	8.28	6.28
4x8 / 3x6	557026	645.16	1	3.5	8.28	6.28
6x10 / 3x6	557027	860.22	1	6.0	10.25	8.25
6x10 / 4x8	557028	860.22	1	6.0	10.25	8.25
8x12 / 4x8	557029	967.74	1	9.0	10.25	8.25
8x12 / 6x10	557030	967.74	1	9.0	10.25	8.25

Centralizer



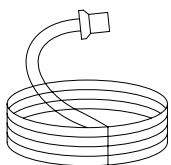
Size	Part Number	\$	mp	lbs each	V	W	X	Y
1-1/2x4	557801	37.63	1	0.04	3.75	1.90	0.25	0.68
2x4	557802	43.01	1	0.04	3.75	2.38	0.25	0.44
3x6	557803	48.39	1	0.11	5.75	3.50	0.25	0.88
4x8	557804	53.76	1	0.21	7.63	4.50	0.25	1.06
6x10	557806	59.14	1	0.26	9.50	6.63	0.25	0.94
8x12	557808	64.52	1	0.34	11.50	8.63	0.25	0.94

Clamp (Metal)



Size	Part Number	\$	mp	lbs each
4	FU110	36.84	1	0.4
6	FU112	38.05	1	0.4
8	FU118	40.79	1	0.5
10	FU119	48.59	1	0.6
12	FU120	53.65	1	0.6

Coil



Size	Part Number	\$	mp	lbs each
4	6084F	4.30	1	0.1
6	6086F	6.45	1	0.1
8	6088	11.27	1	0.1
10	6090	14.67	1	0.1
12	6092	18.09	1	0.1



MSA 250SE

Size	Part Number	Net \$	mp	lbs each			
	MSA 250SE	4250.00	1	24			

Notes

- For each length of pipe and / or each fitting leg, a minimum of (1) standard and (1) sleeve coupling is required for installation.
- Follow the operation guidelines for the fusion unit being used. It is recommended that one of the following four units are used: FU-1202, FU-1202F, FU-2000 or MSA 250SE
- Due to the technical nature of Fuseal Squared, specialty fittings may be required that are not shown in the price list.
- In order to expedite the fabrication of specialty fittings, and to ensure accuracy in requirements, it is recommended that a piping schematic be provide to George Fischer Sloane, Inc. prior to manufacture.
- For accurate installation, it is extremely important to dry fit the primary joints first and carefully mark the pipe end and / or fitting spigot. This will indicate the correct position of the coupling and **ensure that the pipe is inserted to the required socket depth.**
- Prior to fusing permanent joints, you must consider the positioning, alignment, and dry fit and properly mark the next joint to be installed.
- All primary joints must be fused and tested prior to fusion of extended sleeve coupling.
- It is essential that **all** joints are prepared and installed in strict accordance with the published joining instructions. Emphasis should be given to joint cleanliness, proper surface sanding, and clamp compression.

General Terms and Conditions of Sale

George Fischer Sloane, Inc.

Order Acceptance

George Fischer Sloane, Inc. (hereafter "Seller") reserves the right to accept or reject orders.

Credit Approval

Seller must approve Customer's credit prior to sale. Seller may require payment in advance.

Minimum Order

\$100 net.

Freight

Normal domestic freight will be paid on pipe, valve, and fitting orders \$2,500 net or more. Fitting and valve orders will qualify for normal domestic freight allowed on orders of \$1,500 net or more. Freight allowed orders will be sent by a designated carrier/method of Seller's choice. Additional charges will be made for special handling, hotshot service, drop shipment, and air freight when requested.

Taxes

Seller charges Customer for all sales, excise and other taxes and governmental charges Seller is required to collect from Customer. Customers claiming exemption must furnish documentation required by law which is satisfactory to Seller to permit Seller to refrain from collecting such charges.

Broken Carton Charge

Seller may charge \$2 per each invoice line item reflecting sale of broken carton items.

Changes in Prices or Terms

Seller's prices, discounts and terms are subject to change without notice. Any terms and conditions specified on Customer's purchase order, if any, or any other communication which are in conflict with, inconsistent with, or in addition to these terms and conditions, shall be superseded by these terms and conditions, and shall not be binding upon Seller unless expressly agreed to in writing by Seller. Seller's failure to object to terms in any written communication from Customer will not be a waiver of any of these terms and conditions.

Terms

2% 15 Days, Net 30. This discount computed on invoice net of freight.

Other Charges

Customer agrees to pay all expenses of collection (including reasonable attorneys' fees). Upon Customer's failure to make timely payment, Seller reserves the right to terminate this agreement or an order, or to suspend further deliveries, in addition to all other remedies available to Seller. A service charge of 1½% per month on any unpaid balance, or, where unlawful, at the highest rate permitted by law, will be levied on past due accounts.

Special Packaging and Handling Charges

Seller packages and handles orders in the most economical manner. If Seller pays freight, Seller may hold shipment until all items become available. Customer bears extra cost of special packaging or handling requested by Customer.

Order Changes or Cancellations

Seller begins processing orders on receipt. Seller may charge Customer for costs of canceling or changing an order, and Seller may treat order changes as a new order subject to charges and terms applicable to new orders hereunder. Seller will not cancel orders for non-standard or custom produced fittings, valves or pipe if Seller already has produced the items or incurred expenses toward producing them at the time Customer seeks to cancel.

Delivery Dates/Disclaimer of Seller's Liability for Late Deliveries

Seller's delivery dates are estimates. Seller uses best efforts to meet such dates. HOWEVER, SELLER DISCLAIMS LIABILITY FOR CONSEQUENTIAL DAMAGES FROM LATE DELIVERIES UNLESS SELLER ASSUMES LIABILITY FOR SUCH DAMAGES IN WRITING WHEN ORDER IS PLACED. Further, Seller disclaims liability where delivery delays caused by strike, differences with workmen, or causes beyond Seller's control, including but not limited to fires, floods, accidents, government actions, shortages of labor, raw materials, production facilities, or transportation. Where delivery delays are caused by labor problems, Seller is not obligated to seek or obtain any settlement which, in Seller's judgment, is not in Seller's best interest.

Damage or Loss in Transit

Seller ships FOB point of shipment via common carrier, and disclaims liability for damage or loss after goods are delivered to the carrier.

Non-Conforming Shipments

Customer must notify Seller in writing within 7 days after receipt of shipments not conforming with Customer's order, stating specifically Customer's claim of non-conformity, or Customer is deemed to accept the shipment as is. If Seller is satisfied the shipment is non-conforming, Seller will (i) credit Customer for the price of defective goods or goods shipped but not ordered (including allocated outbound and return freight) upon return of the goods; (ii) promptly ship omitted items waiving Seller's new order charges.

Return of Goods

George Fischer Sloane, Inc. does not accept material for return for credit or replacement unless it is for the following reasons:

- a) Product warranty issues
- b) GFS shipping or order entry errors

Return requests must be submitted in writing. Approved requests will be issued an RMA number which must accompany all return shipments. Requests for returns that do not meet our standard terms must be reviewed by the Vice President of Sales or the Customer Service Manager for consideration.

Six Month Limited Warranty

Seller warrants to the project owner, contractor, or mechanic purchasing the goods herein that it will REPAIR OR REPLACE without charge products proved to have manufacturing defects within six (6) months of the date of delivery, and provided Seller, has been given an opportunity to inspect the product alleged to be defective and the installation or use thereof. No liability exists for improper use or installation of Seller's products. NO WARRANTY IS INCLUDED AGAINST ANY EXPENSE FOR REMOVAL, REINSTALLATION OR INCIDENTAL OR CONSEQUENTIAL DAMAGES ARISING FROM ANY DEFECT. THE ABOVE REMEDY IS EXCLUSIVE. THERE ARE NO OTHER WARRANTIES, EXPRESS OR IMPLIED, INCLUDING IMPLIED WARRANTIES OF MERCHANTABILITY OR FITNESS FOR A PARTICULAR PURPOSE. SELLER WILL NOT BE RESPONSIBLE FOR ANY DAMAGES OR OTHER CHARGES IN EXCESS OF THE PURCHASE PRICE PAID TO SELLER FOR THE PRODUCTS, WHETHER IN BREACH OF CONTRACT, WARRANTY OR TORT. Customer is responsible for compliance with all product warnings (including on Material Safety Data Sheets, if applicable) and instructions for use.

Governing Law. All orders shall be governed by Arkansas law, without regard to Arkansas conflict of laws rules. All claims or disputes between Customer and Seller shall be decided by the courts of the State of Arkansas.

George Fischer Product Lines

Piping Systems (Conveyance)

SYGEF® PVDF & SYGEF® HP PVDF (metric)
Beta Polypropylene & PP-n Natural Polypropylene (metric)
+GF+ Schedule 40 PVC
+GF+ Hi-Strength Schedule 80 PVC and CPVC
+GF+ PPro-Seal Natural Polypropylene
+GF+ Fuseal™ Corrosive Waste System
+GF+ Contain-It Secondary Containment
Fusion Technologies (BCF, IR, socket & electro fusion)

Measurement & Control Products

Manual & Actuated Valves
Solenoid Valves
Pressure Regulating Valves
+GF+ SIGNET Flow, Level and Analytical Instrumentation
Rotameters

Custom Products

Custom Specialty Components and Assemblies
Semifinished Products
CALORPLAST Heat Exchangers

+GF+, SYGEF, PPro-Seal, Fuseal, Contain-it, and SIGNET are registered trademarks.

