

**+GF+ Fuseal 25/50™ Kynar® PVDF
Price List Effective April 1, 2004**



**Plenum Rated Corrosive Waste
Piping System**

GEORGE FISCHER +GF+

George Fischer Piping Systems U.S.A.

Kynar® is a registered trademark of Atofina, Inc., for their polyvinylidene fluoride.

The Piping Systems Group U.S.A. within the George Fischer Corporation is dedicated to the development, procurement, manufacture, sales and marketing of plastic piping systems in the Americas.

George Fischer is not only a leading provider of high quality piping systems products, but also offers specific system solutions in a wide range of industries. Our components for the conveyance, measurement, and control of liquids are always an integral part of complete solutions.

Because of the unique diversity of our product range, you'll find George Fischer products in many industries, including chemical processing, semiconductor, pharmaceutical, food, photographic, environmental technology, waste water treatment, and water distribution.

George Fischer offers user-related support, a nationwide stocking distribution network, installer training, and comprehensive documentation. Our area sales engineers are always on hand for support and consultation from the design to the installation phase of a project, today and in the future.

George Fischer, Inc. Tustin, California



George Fischer, Inc. is the sales facility of George Fischer high purity and industrial products in the Americas. The Tustin location offers customer and technical support, performs valve assembly, heat exchanger fabrication and distribution of George Fischer valves and piping systems. A Class 10,000 clean room offers custom fabrication of specialty components for the ultrapure water market.

George Fischer Sloane, Inc. Little Rock, Arkansas



George Fischer Sloane is the engineering, manufacturing, and distribution facility for industrial piping systems.

Signet Scientific Company El Monte, California



Signet Scientific is the engineering, manufacturing, and distribution facility for +GF+ SIGNET instrumentation.

The technical information given in this publication implies no warranty of any kind and is subject to change without notice. Please consult our Terms and Conditions of Sale.

Table of Contents

Pipe	4
Fittings (Electrofusion)	4
Mechanical Union Joints.....	9
Fusion Unit and Accessories	10
General Terms and Conditions of Sale	11
Warranty.....	11

Custom fittings and neutralization tanks available through custom products in Little Rock. Please contact your local George Fischer representative for prices and delivery.

Glossary

S = Socket
SPG = Spigot End (same dimension as pipe outside diameter)
FT = Female Thread
MT = Male Thread
MPT = Male Pipe Thread
FPT = Female Pipe Thread

Not for Use with Compressed Air or Gases

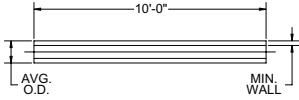
George Fischer, Inc. DOES NOT RECOMMEND the use of thermoplastic piping products for systems to transport or store compressed air or gases, or the testing of thermoplastic piping systems with compressed air or gases in above or below ground locations. The use of George Fischer, Inc. products in compressed air or gas systems automatically voids George Fischer, Inc. warranty for such products, and their use against our recommendation is entirely the responsibility and liability of the installer. George Fischer, Inc. will not accept responsibility for damage or impairment from its products, or other consequential or incidental damages caused by misapplication, incorrect assembly, and/or exposure to harmful substances or conditions.

For more information about any of our product lines, please call (800) 423-2686.

+GF+ Fuseal 25/50 Kynar® PVDF

- P/L 07: Fusion Accessories
- P/L 57: Schedule 40 Pipe
- P/L 58: Electrofusion Molded Fittings
- P/L 59: Electrofusion Fabricated Fittings (Part number ends with F)

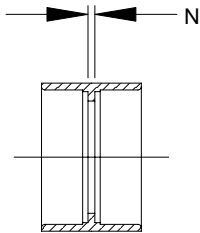
SCH 40 PVDF Pipe



Size	Part Number	\$/ft	Lift qty. (ft)	Average O.D.	Min. wall
1 1/2	V8004-015AA	24.50	100	1.90	0.15
2	V8004-020AA	33.50	60	2.38	0.15
3	V8004-030AA	70.50	30	3.50	0.22
4	V8004-040AA	97.50	10	4.50	0.24
6	V8004-060AA	265.50	10	6.63	0.28

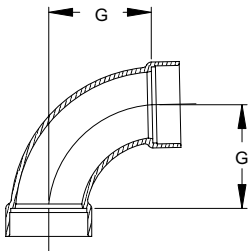
Note: Pipe is non-returnable

Standard Coupling (SxS)



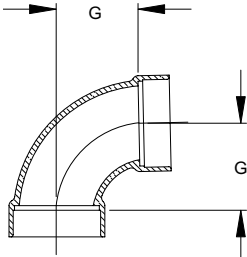
Size	Part Number	\$ ea.	Standard package	N
1 1/2	588001	22.50	8	0.13
2	588002	25.50	6	0.13
3	588003	35.50	3	0.19
4	588004	50.50	2	0.19
6	588006	65.50	1	0.19

1/4 Bend Long Sweep (SxS)



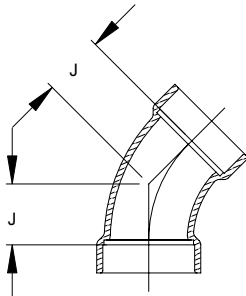
Size	Part Number	\$ ea.	Standard package	G
1 1/2	588276	47.50	4	2.75
2	588277	67.50	4	3.25
3	588278	156.50	1	4.06
4	588279	281.50	1	4.94
6	588256F	950.00	1	11.19

1/4 Bend Short Sweep (SxS)



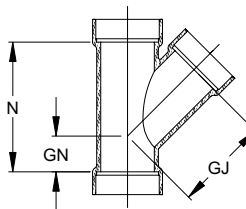
Size	Part Number	\$ ea.	Standard package	G
1 1/2	589276	45.50	4	1.75
2	589277	60.50	4	2.31
3	589278	140.50	1	3.06
4	589279	275.50	1	3.88

1/8 Bend (SxS)



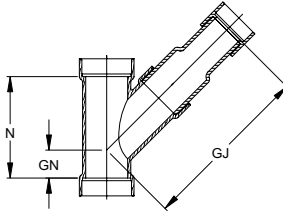
Size	Part Number	\$ ea.	Standard package	J
1 1/2	589501	41.50	4	1.13
2	589502	48.50	4	1.50
3	589503	145.50	1	1.75
4	589504	235.50	1	2.19
6	588506F	495.00	1	6.25

45° Wye (SxSxS)



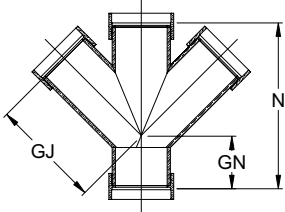
Size	Part Number	\$ ea.	Standard package	GJ	GN	N
1 1/2	585301	67.50	4	2.88	1.13	4.00
2	585302	108.50	4	3.63	1.38	5.00
3	585303	235.50	1	5.00	1.63	6.63
4	585304	375.50	1	6.38	1.88	8.25
6	588306F	565.00	1	14.13	6.25	20.38

45° Wye - Reducing (SxSxS)



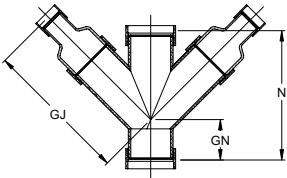
Size	Part Number	\$ ea.	Standard package	GJ	GN	N
2x2x1 1/2	588915	105.50	1	8.50	1.38	5.00
3x3x1 1/2	588917	150.50	1	10.38	1.63	6.63
3x3x2	588916	150.50	1	4.63	0.88	5.00
4x4x2	588918	325.50	1	12.00	1.88	8.25
4x4x3	588919	325.50	1	12.00	1.88	8.25
6x6x3	588330F	825.00	1	15.25	6.25	20.38
6x6x4	588331F	825.00	1	15.25	6.25	20.38

45° Wye - Double (SxSxSxS)



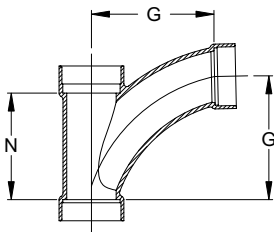
Size	Part Number	\$ ea.	Standard package	GJ	GN	N
1 1/2	585391F	175.00	1	7.50	3.00	10.63
2	585392F	250.00	1	9.00	3.25	12.38
3	585393F	400.00	1	9.13	3.38	12.50
4	585394F	500.00	1	8.50	4.00	13.00
6	585396F	900.00	1	14.13	6.25	20.38

45° Wye - Double Reducing (SxSxSxS)



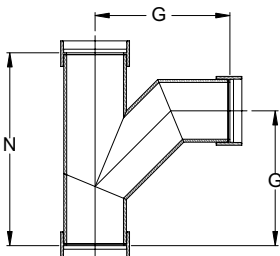
Size	Part Number	\$ ea.	Standard package	GJ	GN	N
2x2x1 1/2x1 1/2	585381F	350.00	1	14.00	3.25	12.38
3x3x1 1/2x1 1/2	585382F	450.00	1	14.50	3.38	12.50
3x3x2x2	585383F	500.00	1	14.50	3.38	12.50
4x4x2x2	585384F	700.00	1	14.38	4.00	12.50
4x4x3x3	585285F	750.00	1	14.38	4.00	12.50
6x6x3x3	585387F	1345.00	1	21.00	6.25	20.38
6x6x4x4	585388F	1360.00	1	15.38	6.25	20.38

Long Turn Tee Wye (SxSxS)



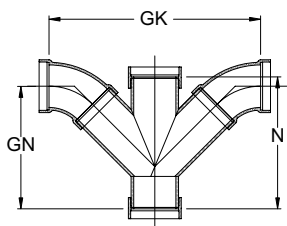
Size	Part Number	\$ ea.	Standard package	G	N
1 1/2	584301	95.50	4	3.94	3.50
2	584302	135.50	4	5.13	4.44
3	584303	365.50	1	7.56	6.50
4	584304	575.50	1	10.00	8.50

Combo Wye & 1/8 Bend (SxSxS)



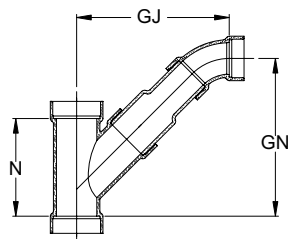
Size	Part Number	\$ ea.	Standard package	G	N
6	589306F	1175.00	1	14.25	20.38

Combo Wye - Double (SxSxSxS)



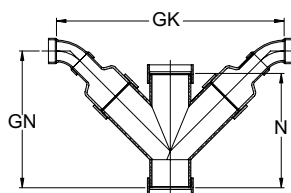
Size	Part Number	\$ ea.	Standard package	GK	GN	N
1 1/2	587191F	350.00	1	14.38	9.13	10.63
2	587192F	450.00	1	17.88	10.75	12.38
3	587193F	650.00	1	18.63	11.00	12.50
4	587194F	950.00	1	20.00	11.63	13.00
6	587196F	1675.00	1	41.00	20.50	20.38

Combo Wye - Reducing (SxSxSxS)



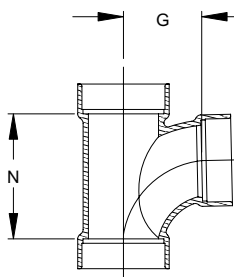
Size	Part Number	\$ ea.	Standard package	GJ	GN	N
2x2x1 1/2	584320	130.50	1	7.82	8.13	5.00
3x3x1 1/2	584321	180.50	1	9.18	9.68	6.63
3x3x2	584322	180.50	1	9.81	9.94	6.63
4x4x2	584323	365.50	1	10.94	11.32	8.25
4x4x3	584324	365.50	1	11.38	11.50	8.25
6x6x3	589330F	940.00	1	15.38	14.25	20.38
6x6x4	589331F	1000.00	1	15.38	14.25	20.38

Combo Wye - Double Reducing (SxSxSxS)



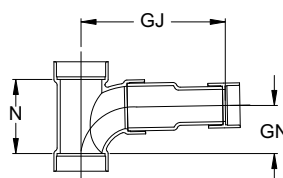
Size	Part Number	\$ ea.	Standard package	GK	GN	N
2x2x1 1/2x1 1/2	587181F	625.00	1	23.38	13.75	12.38
3x3x1 1/2x1 1/2	587182F	850.00	1	24.13	14.25	12.50
3x3x2x2	587183F	875.00	1	25.38	14.50	12.50
4x4x2x2	587184F	1250.00	1	24.88	14.88	12.50
4x4x3x3	587185F	1350.00	1	25.75	15.13	12.50
6x6x3x3	587187F	1825.00	1	35.50	22.25	20.38
6x6x4x4	587188F	1975.00	1	33.25	20.38	20.38

Sanitary Tee (SxSxS)



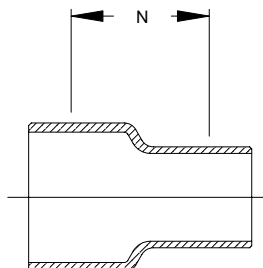
Size	Part Number	\$ ea.	Standard package	G	N
1 1/2	589151	62.50	4	1.75	2.75
2	589152	100.50	4	2.31	3.69
3	589153	210.50	1	3.06	4.88
4	589154	325.50	1	3.88	6.13

Sanitary Tee - Reducing (SxSxS)

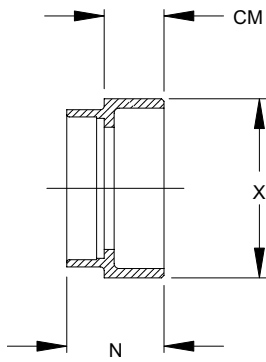


Size	Part Number	\$ ea.	Standard package	GJ	GN	N
2x2x1 1/2	589915	105.50	1	7.19	2.38	3.69
3x3x1 1/2	589917	135.50	1	8.44	3.13	4.88
3x3x2	589916	155.50	1	8.44	3.13	4.88
4x4x2	589918	670.50	1	9.50	3.94	6.13
4x4x3	589919	670.50	1	9.50	3.94	6.13

Pipe Increaser (SpgxSpg)



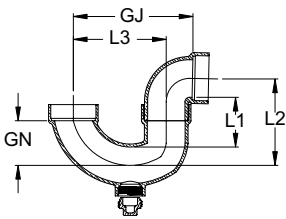
Size	Part Number	\$ ea.	Standard package	N
2x1 1/2	588421	30.50	6	3.19
3x1 1/2	588431	60.50	4	3.62
3x2	588432	65.50	4	3.50
4x2	588442	95.50	3	4.00
4x3	588443	100.50	2	3.68



Reducer Bushing (SpgxS)

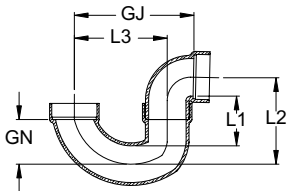
Size	Part Number	\$ ea.	Standard package	CM	N	X
2x1 1/2	588752	31.50	6	1.25	2.06	2.38
3x1 1/2	588762	62.50	4	0.94	1.69	3.50
3x2	588754	74.50	4	0.94	1.81	3.50
4x2	588758	105.50	2	0.94	1.81	4.50
4x3	588756	115.50	2	0.94	1.88	4.50
6x3	588769	255.50	1	1.25	2.19	6.63
6x4	588446	300.50	1	1.25	2.19	6.63

Note: Available late 2004



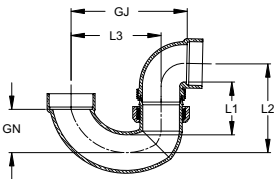
P Trap with Clean-out (SxS)

Size	Part Number	\$ ea.	Standard package	GJ	GN	L1	L2	L3
1 1/2	588201	160.50	2	4.71	4.68	4.91	3.43	3.50
2	588202	220.50	2	6.50	2.43	2.56	4.43	5.06
3	588203	505.50	2	8.56	2.79	3.18	6.42	6.75
4	588204	835.50	2	10.75	3.88	4.06	8.25	8.13



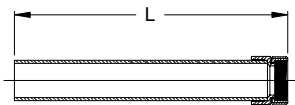
P Trap (SxS)

Size	Part Number	\$ ea.	Standard package	GJ	GN	L1	L2	L3
1 1/2	588991	150.50	2	4.71	4.68	4.91	3.43	3.50
2	588992	210.50	2	6.50	2.43	2.56	4.43	5.06
3	588993	495.50	2	8.56	2.79	3.18	6.42	6.75
4	588994	825.50	2	10.75	3.88	4.06	8.25	8.13
6	588996F	3500.00	1	28.00	11.19	10.81	17.44	16.88



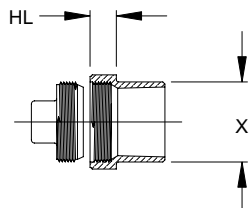
P Trap - Union Connection (SxS)

Size	Part Number	\$ ea.	Standard package	GJ	GN	L1	L2	L3
1 1/2	588211	205.50	2	4.47	1.44	2.00	3.63	3.25
2	588212	295.50	2	6.50	2.31	2.69	4.75	5.06



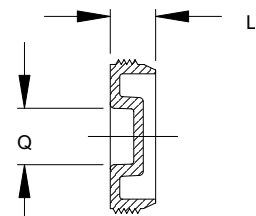
Swivel Sink Strainer Adapter (SpgxFT)

Size	Part Number	\$ ea.	Standard package	L
1 1/2	589217	45.50	1	12



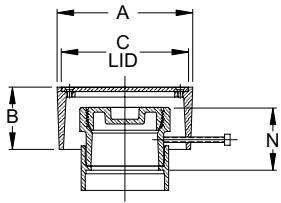
Cleanout Adapter with Plug (SpgxFT)

Size	Part Number	\$ ea.	Standard package	HL	X
1 1/2	588701	35.50	2	0.78	1.90
2	588702	45.50	2	0.78	2.38
3	588703	99.50	2	1.09	3.50
4	588704	130.50	2	1.13	4.50
6	588706	325.50	1	1.31	6.63



Countersink Plug for Cleanout

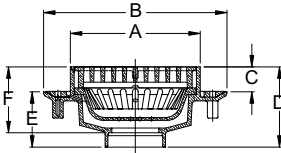
Size	Part Number	\$ ea.	Standard package	L	Q
3	589063	75.50	1	1.03	1.31
4	589064	105.50	1	1.16	1.63



Nickel Bronze Floor Clean-out Assembly (S)

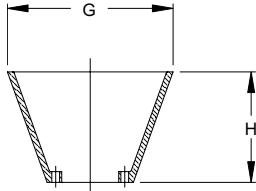
Size	Part Number	\$ ea.	Standard package	A	B	C	N
3	588713A	325.00	1	6.13	2.81	5.70	2.84
4	588714A	375.00	1	6.13	2.81	5.70	2.94

Note: 2" adjustment



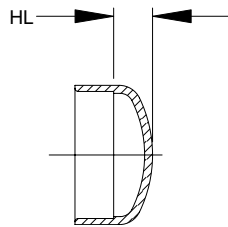
Floor Drain (S)

Size	Part Number	\$ ea.	Standard package	A	B	C	D	E	F
3	589750	465.50	1	8.50	12.00	1.63	5.25	3.63	4.31
4	589751	515.50	1	8.50	12.00	1.63	5.25	3.63	4.31



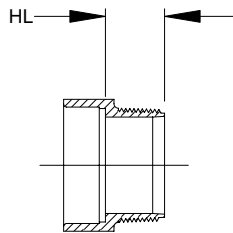
Anti-splash Funnel for Floor Drain

Size	Part Number	\$ ea.	Standard package	G	H
All	587777	100.00	1	6.00	4.00



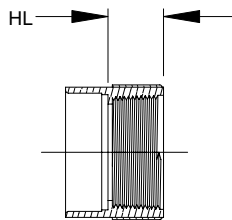
Cap (S)

Size	Part Number	\$ ea.	Standard package	HL
1 1/2	588081	30.50	4	0.65
2	588082	35.50	4	0.75
3	588083	72.50	2	1.62
4	588084	105.50	2	2.11
6	588086	137.50	1	1.58



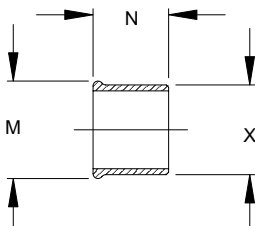
Male Adapter (SxMPT)

Size	Part Number	\$ ea.	Standard package	HL
1 1/2	589871	25.50	4	1.19
2	589872	35.50	4	1.25
3	589873	75.50	2	1.84
4	589874	100.50	2	2.00
6	589876	239.50	1	3.50



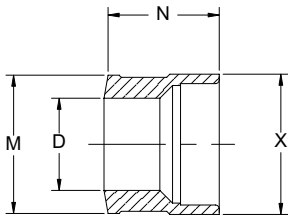
Female Adapter (SxFPT)

Size	Part Number	\$ ea.	Standard package	HL
1 1/2	589891	25.50	4	1.13
2	589892	35.50	4	1.16
3	589893	75.50	2	1.72
4	589894	100.50	2	1.84
6	589896	239.50	1	3.25



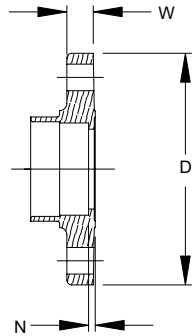
Glass Adapter (SxBead)

Size	Part Number	\$ ea.	Standard package	M	N	X
1 1/2	588411	25.50	4	2.06	2.00	1.9
2	588412	35.50	4	2.58	2.00	2.38
3	588413	75.50	2	3.69	2.5	3.5
4	588414	100.50	2	4.84	2.5	4.5
6	588416	239.50	1	7.12	3.00	6.63



Iron Pipe Adapter (S x Iron Pipe Bead)

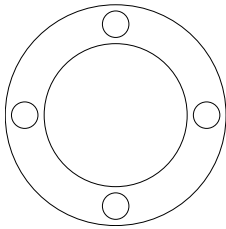
Size	Part Number	\$ ea.	Standard package	D	M	N	X
1 1/2	589431	25.50	4	1.50	2.25	1.88	2.25
2	589432	35.50	4	2.00	2.81	2.00	2.75
3	589433	75.50	2	3.00	3.81	2.63	3.95
4	589434	100.50	2	4.00	4.81	2.63	5.01



Flange (S) ANSI 150 lb.

Size	Part Number	\$ ea.	Standard package	# holes	bolt dia.	bolt cir. dia.	D	N	W
1 1/2	588921	95.50	1	4	0.56	3.88	5.00	0.16	0.66
2	588922	105.50	1	4	0.63	4.75	6.00	0.14	0.75
3	588923	185.50	1	4	0.63	6.00	7.50	0.16	0.94
4	588924	230.50	1	8	0.63	7.50	9.00	0.16	1.14
6	588926	305.50	1	8	0.75	9.50	10.94	0.25	1.02

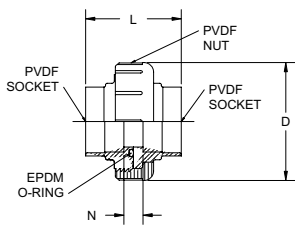
Note: Available late 2004



Flange Back-up Ring

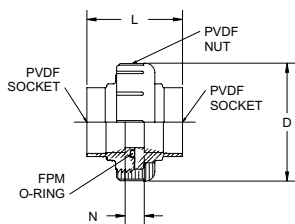
Size	Part Number	\$ ea.	Standard package
1 1/2	589921	35.00	1
2	589922	40.00	1
3	589923	55.00	1
4	589924	65.00	1
6	589926	75.00	1

The Mechanical Union Joint can be used for both transitions from Fusal 25/50 PVDF to Fusal PP or as a PVDF x PVDF Mechanical Union Joint. Select the option you need from the six following styles. PVC and CPVC end connections are also available.



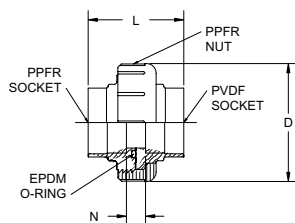
Union (PVDFxPVDF)/PVDF Nut EPDM (SxS)

Size	Part Number	\$ ea.	Standard package	D	L	N
1 1/2	588261	45.50	2	3.75	3.38	0.37
2	588262	60.50	2	4.63	3.68	0.68
3	588263	100.50	2	6.74	4.68	0.90
4	588264	150.50	2	8.38	5.54	1.00



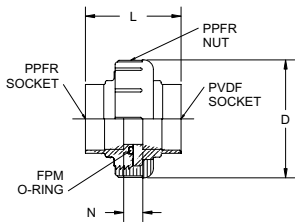
Union (PVDFxPVDF)/PVDF Nut FPM (SxS)

Size	Part Number	\$ ea.	Standard package	D	L	N
1 1/2	588271	50.50	2	3.75	3.38	0.37
2	588272	65.50	2	4.63	3.68	0.68
3	588273	110.50	2	6.74	4.68	0.90
4	588274	160.50	2	8.38	5.54	1.00



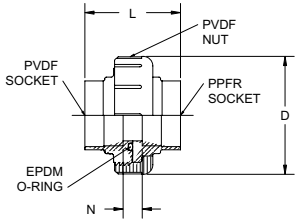
Union (PPFRxPVDF)/PPFR Nut EPDM (SxS)

Size	Part Number	\$ ea.	Standard package	D	L	N
1 1/2	588281	35.50	2	3.75	3.38	0.37
2	588282	50.50	2	4.63	3.68	0.68
3	588283	90.50	2	6.74	4.68	0.90
4	588284	140.50	2	8.38	5.54	1.00



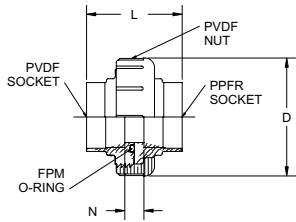
Union (PPFRxPVDF)/PPFR Nut FPM (SxS)

Size	Part Number	\$ ea.	Standard package	D	L	N
1 1/2	589291	40.50	2	3.75	3.38	0.37
2	589292	55.50	2	4.63	3.68	0.68
3	589293	100.50	2	6.74	4.68	0.90
4	589294	150.50	2	8.38	5.54	1.00



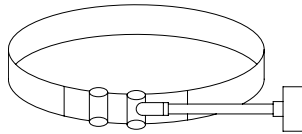
Union (PVDFxPPFR)/PVDF Nut EPDM (SxS)

Size	Part Number	\$ ea.	Standard package	D	L	N
1 1/2	589281	35.50	2	3.75	3.38	0.37
2	589282	50.50	2	4.63	3.68	0.68
3	589283	90.50	2	6.74	4.68	0.90
4	589284	140.50	2	8.38	5.54	1.00



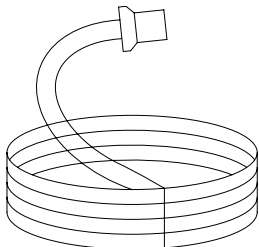
Union (PVDFxPPFR)/PVDF Nut FPM (SxS)

Size	Part Number	\$ ea.	Standard package	D	L	N
1 1/2	588291	40.50	2	3.75	3.38	0.37
2	588292	55.50	2	4.63	3.68	0.68
3	588293	100.50	2	6.74	4.68	0.90
4	588294	150.50	2	8.38	5.54	1.00



Metal Clamp

Size	Part Number	\$ ea.	Standard package
1 1/2	FU150	32.94	4
2	FU200	32.94	4
3	FU300	32.94	4
4	FU110	36.84	4
6	FU112	38.05	1



Coil w/Plug

Size	Part Number	\$ ea.	Standard package
1 1/2	9081	3.28	10
2	9082	3.60	10
3	9083	4.14	10
4	9084	4.74	10
6	9086	5.75	10



MSA 250 Fusion Unit

	Part Number	\$ list	Standard package
	MSA 250-SE	4250.00	1
	MSA 250-EX	4250.00	1

MSA Accessories

	Part Number	\$ list	Standard package
	MSABAR (barcode set w/tester)	30.00	1
	TA1000 (continuity tester)	21.00	1

MSA Fusion Cable

	Part Number	\$ list	Standard package
	MSA001	30.00	1
	MSA001A	150.00	1 set of 5 cables

MSA Carrying Case

	Part Number	\$ list	Standard package
	MSA 2000	250.00	1

General Terms and Conditions of Sale

George Fischer Sloane, Inc.

Order Acceptance

George Fischer Sloane, Inc. (hereafter "Seller") reserves the right to accept or reject orders.

Credit Approval

Seller must approve Customer's credit prior to sale. Seller may require payment in advance.

Minimum Order

\$100 net.

Freight

Full freight will be paid on pipe, valve, and fitting orders \$1,500 net or more. Freight allowed orders will be sent by a designated carrier of Seller's choice. Additional charges will be made for special handling and air freight when requested.

Taxes

Seller charges Customer for all sales, excise and other taxes and governmental charges Seller is required to collect from Customer. Customers claiming exemption must furnish documentation required by law which is satisfactory to Seller to permit Seller to refrain from collecting such charges.

Broken Carton Charge

Seller may charge \$2 per each invoice line item reflecting sale of broken carton items.

Changes in Prices or Terms

Seller's prices, discounts and terms are subject to change without notice. Any terms and conditions specified on Customer's purchase order, if any, or any other communication which are in conflict with, inconsistent with, or in addition to these terms and conditions, shall be superseded by these terms and conditions, and shall not be binding upon Seller unless expressly agreed to in writing by Seller. Seller's failure to object to terms in any written communication from Customer will not be a waiver of any of these terms and conditions.

Terms

2% 15 Days, Net 30. This discount computed on invoice net of freight.

Other Charges

Customer agrees to pay all expenses of collection (including reasonable attorneys' fees). Upon Customer's failure to make timely payment, Seller reserves the right to terminate this agreement or an order, or to suspend further deliveries, in addition to all other remedies available to Seller. A service charge of 1½% per month on any unpaid balance, or, where unlawful, at the highest rate permitted by law, will be levied on past due accounts.

Special Packaging and Handling Charges

Seller packages and handles orders in the most economical manner. If Seller pays freight, Seller may hold shipment until all items become available. Customer bears extra cost of special packaging or handling requested by Customer.

Order Changes or Cancellations

Seller begins processing orders on receipt. Seller may charge Customer for costs of canceling or changing an order, and Seller may treat order changes as a new order subject to charges and terms applicable to new orders hereunder. Seller will not cancel orders for non-standard or custom produced fittings, valves or pipe if Seller already has produced the items or incurred expenses toward producing them at the time Customer seeks to cancel.

Delivery Dates/Disclaimer of Seller's Liability for Late Deliveries

Seller's delivery dates are estimates. Seller uses best efforts to meet such dates. HOWEVER, SELLER DISCLAIMS LIABILITY FOR CONSEQUENTIAL DAMAGES FROM LATE DELIVERIES UNLESS SELLER ASSUMES LIABILITY FOR SUCH DAMAGES IN WRITING

WHEN ORDER IS PLACED. Further, Seller disclaims liability where delivery delays caused by strike, differences with workmen, or causes beyond Seller's control, including but not limited to fires, floods, accidents, government actions, shortages of labor, raw materials, production facilities, or transportation. Where delivery delays are caused by labor problems, Seller is not obligated to seek or obtain any settlement which, in Seller's judgment, is not in Seller's best interest.

Damage or Loss in Transit

Seller ships FOB point of shipment via common carrier, and disclaims liability for damage or loss after goods are delivered to the carrier.

Non-Conforming Shipments

Customer must notify Seller in writing within 7 days after receipt of shipments not conforming with Customer's order, stating specifically Customer's claim of non-conformity, or Customer is deemed to accept the shipment as is. If Seller is satisfied the shipment is non-conforming, Seller will (i) credit Customer for the price of defective goods or goods shipped but not ordered (including allocated outbound and return freight) upon return of the goods; (ii) promptly ship omitted items waiving Seller's new order charges.

Return of Goods

Seller credits Customer for returned goods only if (1) Seller issues a "Material Return Authorization" (Seller's form 1001G), and (2) goods returned are in salable condition. In all cases, the Seller's Returned Goods Policy (GFS Returned Goods Policy #GFS-RMA) shall apply. Except for defective goods or shipping error due to the sole fault of the Seller, Customer shall be entitled to credit against future sales for the returned goods less (i) a minimum 25% net restocking charge for goods in salable condition for products in the original, full quantity GFS package, (ii) allocated outbound freight charges in cases where Seller originally paid, and (iii) Restocking charges of 45% net may apply if re-packaging, cleaning or other special handling is required by GFS, Customer must prepay freight when returning goods. All returns are subject to inspection by Seller upon receipt. Certain materials are non-returnable and other restrictions may apply, refer to GFS Returned Goods Policy #GFS-RMA for details. Said policy can be obtained by calling Seller's Customer Service. Seller reserves the right to refuse return requests.

Six Month Limited Warranty

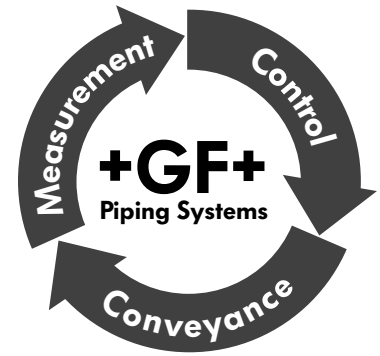
Seller warrants to the project owner, contractor, or mechanic purchasing the goods herein that it will REPAIR OR REPLACE without charge products proved to have manufacturing defects within six (6) months of the date of delivery, and provided Seller, has been given an opportunity to inspect the product alleged to be defective and the installation or use thereof. No liability exists for improper use or installation of Seller's products. NO WARRANTY IS INCLUDED AGAINST ANY EXPENSE FOR REMOVAL, REINSTALLATION OR INCIDENTAL OR CONSEQUENTIAL DAMAGES ARISING FROM ANY DEFECT. THE ABOVE REMEDY IS EXCLUSIVE. THERE ARE NO OTHER WARRANTIES, EXPRESS OR IMPLIED, INCLUDING IMPLIED WARRANTIES OF MERCHANTABILITY OR FITNESS FOR A PARTICULAR PURPOSE. SELLER WILL NOT BE RESPONSIBLE FOR ANY DAMAGES OR OTHER CHARGES IN EXCESS OF THE PURCHASE PRICE PAID TO SELLER FOR THE PRODUCTS, WHETHER IN BREACH OF CONTRACT, WARRANTY OR TORT. Customer is responsible for compliance with all product warnings (including on Material Safety Data Sheets, if applicable) and instructions for use.

Governing Law. All orders shall be governed by Arkansas law, without regard to Arkansas conflict of laws rules. All claims or disputes between Customer and Seller shall be decided by the courts of the State of Arkansas.

George Fischer Product Lines

Piping Systems (Conveyance)

SYGEF® PVDF & SYGEF® HP PVDF (metric)
Beta Polypropylene & PP-n Natural Polypropylene (metric)
+GF+ Schedule 40 PVC
FuseBond Schedule 40 PFA
+GF+ Hi-Strength Schedule 80 PVC and CPVC
+GF+ PPro-Seal Natural Polypropylene
+GF+ Fuseal Corrosive Waste Systems
+GF+ Contain-It Secondary Containment
Fusion Technologies (BCF, IR, socket & electro fusion)



Measurement & Control Products

Manual & Actuated Valves
Solenoid Valves
Pressure Regulating Valves
+GF+ SIGNET Flow, Level and Analytical Instrumentation
Rotameters

Custom Products

Custom Specialty Components and Assemblies
Semifinished Products
CALORPLAST Heat Exchangers

+GF+, SYGEF, PPro-Seal, Fuseal, Fuseal Squared, Contain-it, and SIGNET are registered trademarks.

Visit our website at www.us.piping.georgfischer.com or call (800) 423-2686 for more information.

GEORGE FISCHER +GF+

George Fischer Sloane, Inc., 7777 Sloane Drive, Little Rock, AR 72206-3872

Tel: (501) 490-7777, Toll-Free (800) 423-2686, Fax (501) 490-7100

email: info@sloane.georgfischer.com, www.sloane.georgfischer.com

A	Georg Fischer Rohrleitungssysteme GmbH, Sandgasse 16, A-3130 Herzogenburg, Tel. 02782/856 43-0, Fax 02782/851 56, e-mail: georgfischer@via.at
AUS	George Fischer Pty. Ltd., 4 Jacks Road, AUS-South Oakleigh, Victoria 3167 Tel. 03/9563 88 99, Fax 03/9563 89 66, e-mail: sales@georgfischer.com.au
B/L	Georg Fischer N.V./S.A., Digue du Canal 109-111 – Vaartdijk 109-111, B-1070 Bruxelles/Brussel, Tél. 02/556 40 20, Fax 02/52434 26, e-mail: 106267.254@compuserve.com
BRA	George Fischer Ltda Av. das Nações Unidas, 21689 CEP 04795-100 - S. Paulo - SP Tel.: (5511) 5687 1311 Fax: (5511) 5687 6009, e-mail: vendas@br.piping.georgfischer.com
China	Georg Fischer Pip e-mail: gfsro@public.shanghai.cn.gb.com
CH	Georg Fischer Rohrleitungssysteme (Schweiz) AG, Amsler-Laffon-Strasse 1, Postfach, CH-8201 Schaffhausen, Tel. 052/631 3026, Fax 052/631 2897, e-mail: info@rohrleitungssysteme.georgfischer.ch , Internet: http://www.piping.georgfischer.com
D	Georg Fischer GmbH, Daimlerstrasse 6, Postfach 1154, D-73093 Albershausen, Tel. 07161/30 20, Fax 07161/30 22 59, e-mail: info@georgfischer.de , Internet: http://www.georgfischer.de
DK	Georg Fischer A/S, Klintehøj Vænge 17, DK-3460 Birkerød, Tel. 045/81 19 75, Fax 045/81 16 22
E	Georg Fischer S.A., Alcalá, 85, 2º, E-28009 Madrid, Tel. 091/781 98 90, Fax 91/576 85 86, e-mail: 101534.3724@compuserve.com
F	Georg Fischer S.A., 105-113, rue Charles Michels, B.P.174, F-93208 Saint-Denis Cedex 1, Tél. 01/49 22 13 41, Fax 01/49 22 13 00, e-mail: info@georgfischer.fr
GB	George Fischer Sales Ltd., Paradise Way, GB-Coventry, CV2 2ST, Tel. 024/76 53 55 35, Fax 024/76 53 04 50, e-mail: info@georgfischer.co.uk , Internet: http://www.georgfischer.co.uk
I	Georg Fischer S.p.A., Via Sondrio 1, I-20063 Cernusco sul Naviglio (MI), Tel. 02/92 18 61, Fax 02/92 14 07 85, e-mail: office@piping.georgfischer.it
IND	Georg Fischer Trenton Ltd., 201, Delta, Hiranandani Gardens, Powai, IND-Mumbai 400 076, Tel. 022/570 66 52/54, Fax 022/570 66 53, e-mail: epc@bom3.vsnl.net.in
J	Kubota George Fischer Ltd., 2-47, Shikitsuhigashi, 1-chome, Naniwa-ku, J-Osaka 556-8601, Tel. 06/6648 25 62, Fax 06/6648 25 65, e-mail: kgf-yoshi@kubota.co.jp
N	Georg Fischer A.S., Rudsløtta 97, N-1351 Rud, Tel. 067/17 17 40, Fax 067/13 92 92
PL	Georg Fischer Sp. z o.o., ul. Radiowa 1A, PL-01-485 Warszawa, Tel. 022/638 91 39, Fax 022/638 00 94
NL	Georg Fischer N.V., Lange Veenteweg 19, Postbus 35, NL-8160 AA Epe, Tel. 0578/67 82 22, Fax 0578/62 17 68, e-mail: info@georgfischer.nl , Internet: http://www.georgfischer.nl
S/SF	Georg Fischer AB, Box 113, S-12523 Älvsjö-Stockholm, Tel. 08/727 47 00, Fax 08/749 23 70, e-mail: info@georgfischer.se , Internet: http://www.georgfischer.se
SGP	George Fischer Pte. Ltd., 15 Kaki Bukit Road 2, KB Warehouse Complex, SGP-417 845 Singapore, Tel. 747 06 11, Fax 747 05 77, e-mail: info@georgfischer.com.sg
USA*	George Fischer Inc., 2882 Dow Ave., Tustin, CA 92780-7285, Tel. 714/731 8800, Toll Free 800/854 4090, Fax 714/731 6201, e-mail: info@us.piping.georgfischer.com , Internet: www.us.piping.georgfischer.com *includes North, Central, and South America